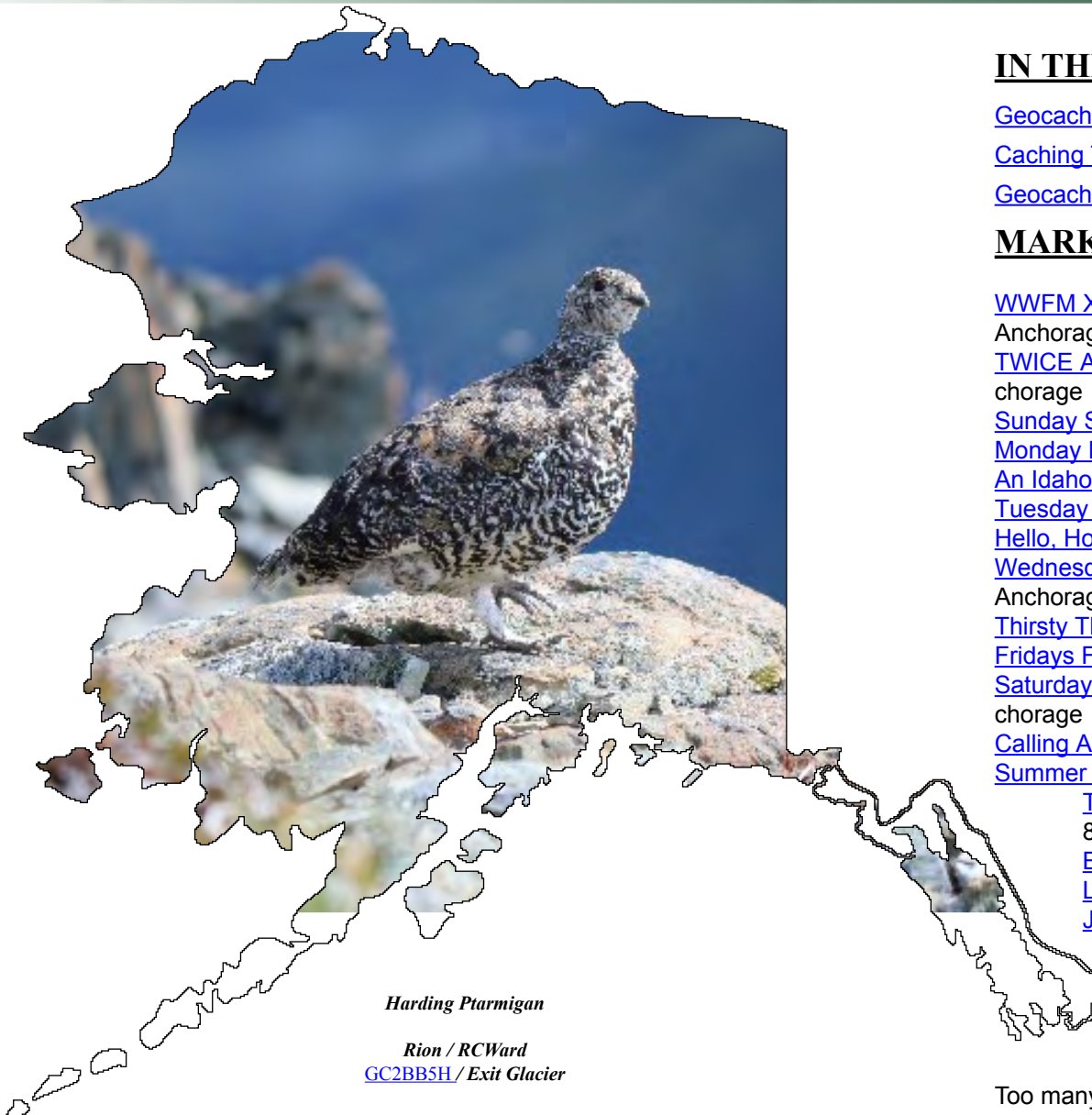


# Around The State



June 2016



*Harding Ptarmigan*

*Rion / RCWard*  
[GC2BBSH / Exit Glacier](#)

## IN THIS ISSUE

[GeocacheAlaska! Updates](#)      [Caching Tricks, Tips, & Tools](#)

[Caching Travelogues](#)      [Events](#)

[GeocacheAlaska! Information](#)

## MARK YOUR CALENDAR

[WWFM XIII - Anchorage AK - Town Square Flash Mob!](#), June 4, 9am, Anchorage

[TWICE AS NICE AS PI - PLUS A SOUVENIR!](#), June 11, 6:28pm, Anchorage

[Sunday Snacks Stammtisch in the park](#), June 12, 3pm, Anchorage

[Monday Mocha's Stammtisch](#), June 13, 5:30pm, Anchorage

[An Idahoan in Alaska](#), June 13, 6pm, Anchorage

[Tuesday Take Out Stammtisch in Taku](#), June 14, 6:30pm, Anchorage

[Hello, Hoonah!](#), June 14, 9am, Hoonah

[Wednesdays Wicked Awesome hotdogs Stammtisch!](#), June 15, 6:30pm, Anchorage

[Thirsty Thursday Stammtisch!](#), June 16, 7pm, Anchorage

[Fridays Fried ice-cream Stammtisch](#), June 17, 6:30pm, Anchorage

[Saturday Successful Stammtisch in Sunset Park](#), June 18, 11am, Anchorage

[Calling All Dads](#), June 19, 2pm, Anchorage

[Summer Solstice 2016](#), June 20, 6:30pm, Anchorage

[Team CSG is in Ketchikan. Stop by for some coffee](#), June 23, 8am, Ketchikan

[Bon Voyage Meet and Greet](#), June 23, 6:30pm, Anchorage

[Lost and Alone in Anchorage](#), June 26, 4:30pm, Anchorage

[Juneau the Way to the Event? 2](#), June 26, 7pm, Juneau

[Spencer Glacier Whistle Stop Camping Kick-Off 2.0!](#), July 15, 2pm, Portage

[Spencer Glacier Whistle Stop Camping 2.0 - Day 2](#), July 16, 2pm, Portage

Too many events to list! Click [here](#) for all scheduled events in Alask!!!

# GeocacheAlaska! Updates

## President's Corner

By Wes Skinner / NorthWes



In geocaching news this month is an announcement from Groundspeak that new challenge caches can now be submitted in accordance with the updated [Challenge Cache Guidelines](#). Well-designed challenge caches are a fun way to target your geocaching activities in an effort to meet a defined set of goals in order to qualify to sign the logbook. You have to find the challenge cache's physical container as well as complete the required actions to qualify. Click on the link to see the [Challenge Cache Guidelines](#), and add a new element of fun to your geocaching day!

This is [National Get Outdoors Month](#), complete with a souvenir for those who logged a cache find or attended an event on June 11<sup>th</sup>. Geocaching is a great way to invite friends to get outdoors – help others find out why you enjoy this game by inviting them along the next time you get outdoors to cache. Take a moment to consider the young people in your life, and help them establish a connection to the outdoors through geocaching. Kids in the Anchorage School District have exposure to geocaching in many of the schools' classrooms, so there's an often-untapped enthusiastic beginner who'd love to be invited along on your next outing just waiting for an adult to ask them to go along. Getting outdoors to geocache for youngsters requires an adult or two to bring them along to the caching trail, so expand your own horizons by helping introduce others of all ages to the game you enjoy.

Speaking of introducing others to the 'Get Outdoors' initiative, be sure to demonstrate the CITO habit as well. Cache In Trash Out activities as part of a visit to one of our many parks or trails has a dramatic and immediate positive impact on the beauty of the site you're visiting, and on the people who notice you picking up what others have left behind. During a recent visit to the Flattop parking lot, I collected more than three dozen cans and bottles while showing a visitor the incredible vista from the viewpoint just above the parking lot. My visitor needed no encouragement to help me fill the trash bag I'd brought along, and he was bemused by the positive reaction of other park users (several of whom took the time to help us clean up one particular mess). No one realized I was seeking (and that I found!) the ammocan geocache hidden just off the trail there – they

were too busy seeing me do something about the trash they'd all been carefully stepping over. Be a positive agent of change – inspire others to better behavior by demonstrating how you care for the parks and trails as you Get Outdoors!

## Dorothy June Brent / duhrowthee

October 10, 1993 – April 21, 2016

Dorothy June Brent, aka [duhrowthee](#), of Juneau, passed away on April 21, 2016, after a five-year battle with cancer. During her ten-month time as a geocacher, she found eleven caches and hid one. She was well-known in Juneau and had a positive influence on her soccer teammates, peers she tutored in high school, and all others with whom she came in contact.

Juneau cacher [davidaknz](#) adopted duhrowthee's cache, [Gold Creek Geo](#), after approaching her family about keeping the cache alive. His daughter and Dorothy played soccer together in high school.

Dorothy's full obituary may be read on the Juneau Empire's [website](#).



## Fundraising Committee

The Fundraising Committee is looking for fun and creative people. You're invited to join us and see what its all about. Join us for the next meeting which is Monday, June 6th @ 6pm in the Starbucks across from Target on 100th and C Street.

If you're unable to make this one but, are interested in joining us in the future, please send Sean / [FTL – AK](#) a message and he will make sure to keep you in the loop.

# GeocacheAlaska! Updates

## New Monthly Giveaway for paid Sourdough Members

By: Sean Gaither / FTL-AK

So the GeocacheAlaska! Board voted to increase member support, and we will have a monthly giveaway for all paid members of GeocacheAlaska! Why are we doing this? We are doing this to provide some added value to your membership. I will be providing a list of who won on the newsletter for the year so everyone can see. Will it be you?

Rules:

1. Only paid GeocacheAlaska! Members are allowed to participate. I have that list and will look at it monthly so no need to do anything except keep your membership current!
2. You can only win 1 time per Calendar Year Jan-Dec per name – sorry, family accounts with 5 users you only pay for one membership so you will only have one name in the drawing.
3. If you became a paid member in any month you are immediately available to be in that month's drawing.
4. All prizes are selected by the board and are not available to be changed or traded for something else. If you don't like your free prize you are more than welcome to place it in a Geocache for a FTF prize! Or I can give you my home address...
5. All prizes will be shipped or hand delivered to our members. This will be paid for by us and not you. Please make sure we have the most up to date info when you renew your membership.
6. If available, a picture of the winner with the prize will be posted in the newsletter. If I can't get a photo of me handing you the item I will make sure to provide a photo of the item so everyone can see what amazing item or items you got!

March Winner: Meljo is the proud winner of a Limited edition Dutch Windmill Trackable. (Two are Still Available in the GeocacheAlaska! Store.)

April Winner: Braveladd is the proud winner of a 15 Year Spinner Geocaching Coin.

May Winner: Polgera is the proud winner of a 15 year Road Trip Crew coin!

twinkywalks is the June winner of a Lego Ammo Can Cache Container. \*some assembly required\*. Thank you for being a paid member of GeocacheAlaska!

## Membership Renewal Reminder!

Don't forget to renew your GeocacheAlaska! membership. Renewal/sign up information is always available on the last page of the newsletter, or on the GeocacheAlaska! website.

Save a stamp and renew your membership or join [GeocacheAlaska! online](#) today using your PayPal account or a major credit card. Alternatively, you may [click here](#) to download a printable membership form to mail. GeocacheAlaska!, Inc. is a not for profit 501(c)(3) organization, so your membership fee qualifies as a tax deductible donation.

Sourdough Members enjoy voting rights, are eligible for event and merchandise discounts, and can set up a geocachealaska.org email address. Download and read the [by-laws](#) (86k pdf) for more details. All paid Sourdough Members will be issued an official GeocacheAlaska! trackable Sourdough Nametag! To see these trackables in action, take a look at our [current member's traveling tags!](#) Sourdough memberships are now a rolling 12-month period based on your initial sign up date. (Unless you are on PayPal autopay subscription, you will receive a renewal notice near the beginning of the anniversary month of your initial membership with dues payable by the end of that month.)

Cheechako Memberships are free and allow you to "try before you buy" to see what the organization is all about. Adding your name to our membership list helps with negotiating park permits. Cheechako Memberships are available by printing and mailing the membership application form, or you scanning the form (or a legible picture of it) and emailing it to the [Secretary](#).

## Editor's Note

By Cathy Wilmeth / *The\_Firefly*

The submission deadline for the next issue of *Around The State* is **June 20, 2016**. I'm happy to help with any questions or concerns you may have about submitting! Send to [editor@geocachealaska.org](mailto:editor@geocachealaska.org)

# Caching Tricks, Tips, and Tools

## Reviewer's Corner

By Michael Malvick / Greatland Reviewer

### Property Ownership References

After a recent spate of cache archival or unpublishable caches due to caches being placed on private property without permission of the land owner within the Municipality of Anchorage, I am posting some handy references for cachers to check before submitting a cache for review. I don't specifically check each submission unless I have good reason to. I trust that you, the Cache Owner has "[the landowner's and/or land manager's permission before you hide any geocache, whether placed on private or public property](#)," as confirmed when checking the box at the bottom of the cache submission page that reads "I have read and understand [the guidelines for listing a cache](#)."

The Municipality of Anchorage GIS is located [here](#), Anchorage Park Locations are mapped [here](#), and specific parcel information is available [here](#). Links to land parcel information for other select Alaska communities may be found on the GeocacheAlaska! [Land Manager webpage](#).

Alaska's wonderful spring weather and endless summer daylight have inspired many cachers to host Events and Cache In Trash Out (CITO) Events. Event hosts are reminded their Event Cache pages must include a start time and an end time. The end time for an Event must be at least thirty minutes after the start time and CITO Event end times must be at least sixty minutes after the start time. By posting the end time, cachers know how long they can expect the host and other attendees to be at ground zero. Also, Events and CITO events must be submitted at least fourteen days ahead of time.

Sometimes the original location a cacher chose for a cache just doesn't work out due to continued mugging, construction, or other causes. Cache Owners may relocate a cache up to 528' without a Reviewer's help. For moves more than 528', Cache Owners must e-mail or message the Reviewer with the new coordinates. For the latter, the Cache Owner should consider if it would be better to archive the first cache and submit a new cache if the location and hide would provide cache seekers with a new experience. In either case, Cache Owners must be certain the new location complies with the 528' proximity to other cache(s) guideline, just as a new cache must. Update Coordinates logs are recorded in a list that Reviewers periodically check for guideline compliance.



Cachers are reminded that Groundspeak changed their policy regarding Reviewer's clearing the "Needs Maintenance" attribute on cache pages that are no longer being maintained. If you are aware of a cache that has the "Needs Maintenance" attribute, but is actually all right, you may e-mail or message me through my profile with the GC number of the cache and a statement of why the attribute should be removed.

Last month's and this month's newsletters featured the sad news of the passing of Anchorage's [akwhodini](#) and Juneau's [duhrowthee](#). Cache Owners are reminded to make certain family members know their wishes regarding the cache part of their estate. Groundspeak will administratively adopt caches to cachers who agree to care for the deceased's caches after receiving written permission from the next of kin. If family members are also cachers and were provided with the login credentials for the deceased's online account, they can assume maintenance of the cacher or adopt the caches to other members of the caching community via [www.geocaching.com/adopt](#).

## Challenge Caches Return

By Michael Malvick / Greatland Reviewer

The Groundspeak Moratorium on Challenge Caches has been lifted and they can again be published. Please very carefully read the following resources before submitting a Challenge Cache for review because the Guidelines have changed and many already published Challenge Caches could not be published today. Challenge Caches published before the 2015 moratorium are grandfathered.

For more information, see:

[Challenge Cache Guidelines](#)

[Help Center article -Challenge Checkers](#)

[Help Center article - Challenge Cache Subjectivity](#)

[Blog Post - Return of Challenge Caches](#)

["Return of challenge caches" Groundspeak Forum](#)

Following the new guidelines and keeping the number of appeals to a minimum will assure the long-term viability of Challenge Caches. However, if Challenge Caches return to being contentious (more than half the appeals to Groundspeak prior to the moratorium were related to Challenge Caches), they will be discontinued.



# Caching Tricks, Tips, and Tools

## Alaskan National Wildlife Refuge Boundary Map Files Now Available

Geocachers are reminded that caches are not allowed in any of Alaska's National Wildlife Refuges. The affected land parcels are:

Alaska Maritime National Wildlife Refuge  
[Alaska Peninsula National Wildlife Refuge](#)  
[Arctic National Wildlife Refuge](#)  
[Becharof National Wildlife Refuge](#)  
[Innoko National Wildlife Refuge](#)  
[Izembek National Wildlife Refuge](#)  
[Kanuti National Wildlife Refuge](#)  
[Kenai National Wildlife Refuge](#)  
[Kodiak National Wildlife Refuge](#)  
[Koyukuk National Wildlife Refuge](#)  
[Nowitna National Wildlife Refuge](#)  
[Selawik National Wildlife Refuge](#)  
[Tetlin National Wildlife Refuge](#)  
[Togiak National Wildlife Refuge](#)  
Yukon Delta National Wildlife Refuge  
[Yukon Flats National Wildlife Refuge](#)

To help you know when you are inside or outside of a refuge, gpx files are now available on the GeocacheAlaska! [Land Manager webpage](#) for all but two of the Refuges in Alaska. Alaska Maritime National Wildlife Refuge and Yukon Delta National Wildlife Refuge will be provided once "simplified" versions are developed because they are currently too complex with their shapes outlining every haystack island, lake and slough to be practical. Visit [this thread](#) in the GeocacheAlaska! Forums or reference the [March 2015](#) newsletter for instructions for how to upload the file to your GPS or a map application.

## Vote for the Next Subaru Lifestyle Icon



Please help get the word out for our community to vote early and vote often for the new Subaru lifestyle icon just like we voted to get "geocaching" added to the official Scrabble Dictionary.

There's a [vote](#) underway for a new lifestyle icon for Subaru owners to attach to a badge on their vehicles. Votes are being accepted through August 31, 2016.

*Mike Malvick / Ladybug Kids says:*

*Now we can badge our Subarus, even though =>*

(Go ahead and give yourself a pat on the back if you get the reference!)



## June is Get Outdoors Month

Every geocacher has experienced the magic of the great outdoors - diving into a cold alpine lake at the end of an arduous hike or watching the sun disappear over the horizon from a hidden beach. Now it's time to help others discover that magic.

This June, [Geocaching.com](#) and [GeocacheAlaska!](#) are joining [organizations across the country](#) in celebrating Get Outdoors Month. You're invited to join us! Here's how:

- **Earn the Get Outdoors Day souvenir** by finding any geocache in the United States on Saturday, June 11. For more information, visit the [Geocaching Blog!](#)
- **Celebrate the National Park Service's second century** by exploring the "[Find Your Park](#)" GeoTour.
- **Share your Get Outdoors Month experiences** on social media using #geocaching #GetOutdoors #geocachealaska.

# Caching Travelogues

## How We Met Our Sister in Tennessee

By Molly Baker / mlb (latter half of lrb&mlb)

We have been caching since 2005. Since we have many other interests, we are not full time, spend every free moment cachers. It is a (mostly) controlled addiction. We like to be out and about and on the move. I call it destination walking. And we are somewhat competitive. There is nothing I like more than to be at ground zero and stand around idly until lrb notices and asks, "What?" "Oh," I reply, "You haven't found the cache yet. I'll wait until you find it too." It works both ways.

Like all cachers, we have tales from the caching trail of FTF chases, crazy adventures, and unexpected moments. Sometimes caching brings you heart-ache and joy at the same time. This is one of those stories.

A few years ago we received an email from a noncacher who lived in Tennessee. Having noticed that we owned a cache adjacent to a school parking lot, he wondered if we would be willing to launch a travel bug from that cache for his sister, Pat, who *is* a cacher. Pat tragically lost her daughter, Monica, and grandson in November 2012. She hoped to launch a travel bug close to Eagle River Christian School, the location of Monica's first teaching assignment. Pat's plan was to track the *Mama, I'm Coming Home* travel bug back to Tennessee. The travel bug mission would be to travel the same route Monica drove back to her hometown of Clarksville, passing through the same states and Canadian provinces. "I don't want it to fly," Pat would later explain.

Of course, we were happy to assist with the travel bug launch. A few emails evolved into an exchange of emails with Pat. We suggested, in addition to launching the travel bug, that we hide a tribute cache in Monica's name (see *Remembering Monica* [GC5AJYK](#)). Pat embraced the idea and mailed us the travel bug, as well as starting contents for Monica's cache. Included were a picture of Monica with her son Jude and bracelets made by the students in Monica's school, as a fund raiser to establish a scholarship in her name. We added some quarters from some of the states through which Monica traveled. As we exchanged thoughts, memories, and ideas, we received snapshot of what a special lady Monica was. It was clear that she loved Alaska and was dedicated to teaching.

Pat has a son and family who live in Wasilla. She flew to Alaska for a visit in the summer of 2014. We met her, laughed with her, cried with her, cached our way through Hatcher Pass with her. There was an instant and profound connection; it felt like we had known her our entire lives. We have remained close and consider Pat family, our sister in Tennessee. While we mourn Monica and feel sad we never met her, we celebrate the joy of knowing Pat and how she has enriched our lives.



# Caching Travelogues

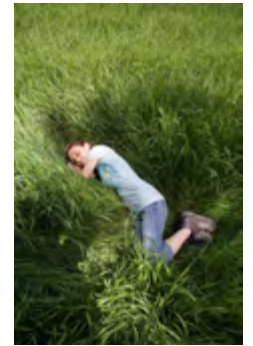
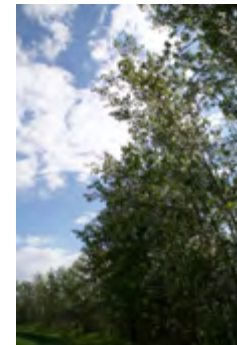
## Caching Weekend

By: Sean Gaither / FTL-AK

Well, FTL-AK, TheLastFrontier, and friends enjoyed the sun and some new geo-caches. Please check out some of the areas we visited for our 3 day weekend.

- [GC6H8RR](#) - Now, WHAT is it called?
- [GC13B6Y](#) - Peanut's Patch Cache
- [GCWXJ2](#) - Out of My Mine
- [GC6FHJ5](#) - This one is for Johnathan!

Hope you had a great 3 day weekend.





# Caching Travelogues

## Ice Road Cacher

By Michael Malvick / Ladybug Kids

During late-April through mid-May, I made three trips north of the Arctic Circle from Fairbanks, including one all the way up the Hickle/Dalton Highway to Prudhoe Bay. Along the way, I verified most of the caches along the route are ready for the summer tourist season and placed six more at scenic points of interest. The Dalton Highway has been somewhat tamed since it was constructed to support pipeline construction, with long stretches of pavement and excellent grading of the gravel stretches by the Alaska Department of Transportation. However, due to the lack of services (available seasonally at the Yukon River and year-round at Coldfoot and Prudhoe Bay), two spare tires, a fuel can, DEF (for new diesel engines), a CB radio, and tool box are still recommended kit.

Only a few of the many highlights of the drive include:

Hilltop Truck Stop – Located at Mile 5.5 of the Elliot Highway. Wonderful food including ice cream and the last flush toilets before the Yukon River.

[GC6H6YB](#) Another Pipe Dream – Located at Washington Creek, view and learn about field testing for the future natural gas pipeline

[GC158X3](#) Livin' Good in Livengood – At this point, you have traveled ten miles from Fairbanks on the Steese Highway and seventy miles on the Elliot Highway. The Dalton Highway begins just two miles further up the road. This location features a large pull-out for a final check of tires and tie-down straps before entering the realm of the Ice Road Truckers. If time permits, take the road into Livengood to see gold mining in progress.

[GC1F765](#) Big Step Up! – Don't be intimidated by the tall steep road cut leading to ground zero. There is a benign walk through the woods if you park at the uphill end of the feature.

[GC2CW6Z](#) Bent Yukon and [GC2XGQD](#) Yukon River Crossing – On the north bank of the



Yukon River. I found the first cache, but not the second. However, the location of the second cache provides a better view of the Yukon River Bridge. If there is no response from the Cache Owner before my next trip, I may take a replacement cache up there.

[GC5Y4GG](#) Order Up! – Seasonal food and beverage at the Hot Spot, but bring a lot of dough. A hamburger will cost you \$12. Be sure to check out the artesian well just to the north of the establishment (EarthCache anyone?).

[GC15NRE](#) Fireweed Valley – Up a side road from the Dalton Highway with a great view.

[GC15A2C](#) Number 28 is a park and grab when there isn't snow on the ground and the cache is in its hiding place.

[GC21Q2Q](#) Finger Mt,  
[GC59AB5](#) Grand Granite,  
[GC2XTQP](#) Finger Rock Earthcache – Visit a landmark used by pilots and enjoy the view of the Kanuti Valley to the north while finding three caches during one stop.

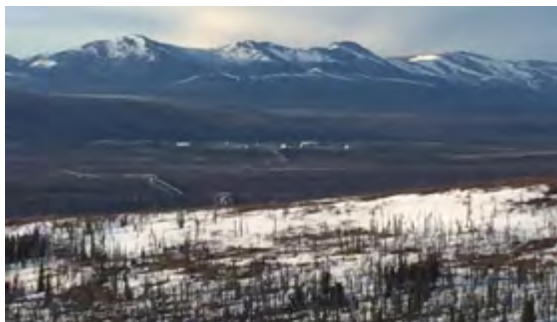
[GC14RYA](#) Kanuti Guardian – Placed nine years ago at the biggest snow fence I have ever seen. I DNFed the cache the first time I looked for it and found it floating in a melt water puddle the very next week.

[GC4EN6P](#) Hank's Pipe Dream – A wonderful tribute cache to a pipeline construction worker located at the flat spot that was known as Old Man Camp where hundreds of workers were housed during pipeline





# Caching Travelogues



construction. [GC4M0KG](#) a tree hug for N'oreasters :), [GC1G7NB](#) The «Real» Arctic Circle, [GCPYJW](#) Alaska's Arctic Circle, [GC94D4](#) Arctic Crossing, [GC2CW77](#) Bent Inner Circle, [GC4MFXC](#) N'oreasters Trip Wire – Six caches clustered around the Arctic Circle over a four-mile stretch of Dalton

Highway. There is a nice campground at the Arctic Circle and outhouses. GC94D4 is one of Alaska's fifty oldest remaining caches. Be very careful seeking GC2CW77 because there is not suitable parking anywhere near ground zero.

[GC6H6YC](#) Turkey's Handle – Ground zero features interpretive signs, a view of the Brooks Mountain Range and the Trans Alaska Pipeline Pump Station 5, and restrooms. You can also see Prospect Creek from here, site of the coldest recorded temperature in Alaska.



[GC1YXX8](#) Gas up at Coldfoot and [GC1VYGB](#) Coldfoot Camp Cache – Year round lodging, food, fuel, and flush toilets. There is also a Public Lands information center for Gates of the Arctic National Park and the Arctic National Wildlife Refuge that offers a nature trail that swings by the Coldfoot Cemetery.

[GC1VZPT](#) a day with Elias – Fun cache that has even passed inspection by the Alaska Department of Transportation. Very nice campground along Marion Creek.



[GC4NAGE](#) Arctic Village and [GC5WC9J](#) Long Awaited Mail – Take a side trip off the Dalton Highway and a step back in time to visit the goldmining town

of Wiseman. The road to Nolan and access to Gates of the Arctic National Park branches off just before you reach the outer limit of this town on bank the Koyokuk River.

[GC5FBDR](#) Mt. Sukakpak Lunch Spot and [GC4QX8J](#) Mt. Sukakpak Final Ascent – Two caches crying out for a FTF. Relatively easy trailless terrain leads you up the flank of a major local landmark. There are restrooms just a little way toward the north at a pleasant spot next to the Koyokuk River.

[GC59AC3](#) Wilderness Wisdom – I saved this cache from the fiber optic crew and moved it well out of their way. Be sure to check the coordinates with my log since the Cache Owner has not yet updated them.

[GC6H6YD](#) AtiGUN I, [GC596WW](#) ATGA2, and [GC6H6YG](#) AtiGUN II – Three caches that span Alaska's highest highway pass. Take your time here to take in the majestic mountains. Last restrooms before Galbraith Lake are at the bottom



of Chandar Shelf for northbound travelers.

[GC2XVNC](#) Galbraith Lake EarthCache – Located about four miles off the Dalton Highway near the Galbraith Lake Campground.

[GC10N67](#) Tundra Dummies – A “memorial” cache for a couple of Cheechakos who thought they could drive their pick-up trucks across the tundra to retrieve caribou they shot. Seriously?

[GC6H6YJ](#) Muskox Musings –



## Caching Travelogues

## Recent Events

Located just north of the Trans Alaska Pipeline Pump Station 3 where musk oxen can be seen throughout most of the year.

[GC6H6YN](#) Saggy Tussocks – As of this writing, the last cache before Prudhoe Bay, sixty miles to the north. Located at an interpretive site overlooking the Sag River. Shortly after passing this location, the terrain really becomes the “North Slope” and there simply aren’t many places to park and hide a cache.

The first cache when arriving at Prudhoe Bay is [GC627BJ](#) Equus Mortuum and there are four other caches in the area accessible to the general public, including the [GC8302](#) Northern Bay virtual cache. [GC3R37J](#) Top of the world! is located near the East Dock area, but is only accessible by hiring the local tour operator who can drive through the oil field check point. Cachers will need to plan ahead to book space on the tour van and provide government identification in order to access the Arctic Ocean.

I look forward to future trips up the road because I still have two caches close to the road that were inaccessible due to snow, two caches awaiting their FTF on the flank of Mount Sukakpak which I attempted to get to, but ran out of time due to avalanche control in Atigun Pass, and two in the Brooks Range, five and seven miles up drainages from the Dalton Highway.

So, plan your trip today to experience five hundred of the most remote, yet accessible, highway miles anywhere. Cachers not wishing to drive a round trip to Prudhoe Bay could coordinate with another caching team and drive one way and fly the other on Alaska Airlines. I recommend allowing a minimum of two days to complete the trip in one direction to have plenty of time for caching, taking in the views, and watching critters. Since the last three hundred miles of the trip are north of the Arctic Circle, the sun won’t set around the Summer Solstice. Weather forecasts for regions north of Fairbanks may be obtained here from the [NOAA website](#). Road conditions for Fairbanks to Prudhoe Bay along the Steese, Elliot, and Dalton Highways may be obtained by dialing “511” (while still within range of a cell tower!) and from the [Alaska Department of Transportation website](#).

Check out these recent Geocaching events!

[May the Fourth Be With You! 5/4/16](#), May 4, 6pm, Anchorage

[Cinco de MMMMayo!!](#), May 5, 6:30pm, Anchorage

[Bring Your Mom!!](#), May 8, 2pm, Eagle River

[End of a Streak - 2 Years 2 Days - Stammtisch](#), May 13, 5:30pm, Anchorage

[I'm Gonna Touch the Butte](#), May 21, Noon, Palmer

[Passing Thru Juneau Meet & Greet](#), May 24, 9am, Juneau



# Recent Events

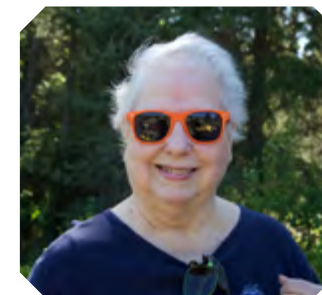
## **FNBP Hilltop Trailhead CITO Event:** [GC6HFAF](#)

N 61° 08.560 W 149° 44.584

*By: Sean Gaither / FTL-AK*



Thank you everyone for your help cleaning the area. I love this area and am happy I was able to share it with you. We had 24 people come out to clean - that's 24 hours - *one day* - we donated to the Parks Department. An extra special thanks to [Alaska Regional Hospital](#) for donating the sharps containers (luckily we didn't need them this weekend). Also, thank you GeocacheAlaska! for the prizes.





# Around The State

## GEOCACHEALASKA! MEMBERSHIP

There are two membership levels at GeocacheAlaska! Inc.

Sourdough Membership (formerly known as Premium Membership) affords you discounts in the GeocacheAlaska! online and traveling stores and events that have an entrance fee (Geofest, etc.), voting rights in Board of Directors elections and a warm fuzzy feeling for helping underwrite the organization's operating expenses that include web hosting, printing, banners, post office box fees, event prizes, and lots of other things that are required to make things happen. Because GeocacheAlaska! is an incorporated 501(c) (3) tax exempt organization, your membership dues are tax deductible.

If you cannot join as a Sourdough at this time, you may support GeocacheAlaska! by joining as a Cheechako (formerly known as Associate) Member. This will allow you to receive the monthly newsletter and e-mail announcements. More members at any level gives GeocacheAlaska!'s more clout and credibility during land manager conversations, so sign up today!

There are a few ways you can join GeocacheAlaska! at the Sourdough level for \$20/year.

1. Navigate to the [GeocacheAlaska! webpage](#) and:
  - A. Click on the "Subscribe" button to set up an automatic subscription which will renew annually. Please enter your caching name in the provided box. OR
  - B. Click on "Add to Cart" to purchase an annual membership. OR
  - C. Download a membership form you can print and mail with your payment.
2. Attend one of the upcoming GeocacheAlaska! events and speak to any Board Member.

Find us online at:

1. GeocacheAlaska! Website: <http://www.geocachealaska.org>
2. GeocacheAlaska! Forums: <http://geocachealaska.proboards.com/index.cgi>
3. Facebook Group: <https://www.facebook.com/groups/geocachealaska/>
4. GeocacheAlaska! Facebook Page: [GeocacheAlaska! Page](#)
5. Follow us on Instagram [@geocachealaska](#)
6. Follow us on Twitter [@GeocachAlaska](#)

Questions? E-mail to [contact@geocachealaska.org](mailto:contact@geocachealaska.org)

## JOIN US ON FACEBOOK, Twitter, and Instagram!

Like our official [GeocacheAlaska! Page](#) on Facebook to keep up to date on things happening with GeocacheAlaska! Also, join the official [GeocacheAlaska! Group](#) on Facebook to stay in touch and share your activities with fellow members of the geocaching community. This is where GeocacheAlaska! members can plan caching adventures, post photos, and pass messages within the membership ranks. This Facebook Group is designed to be yet another member benefit for Sourdoughs and Cheechakos alike. Visit our Group and request to Join so you can start viewing and participating with GeocacheAlaska! and your fellow geocachers.



[@GeocacheAlaska](#) Follow GeocacheAlaska! Inc. on Twitter!

Follow us on Instagram! [@geocachealaska](#)

## STATE PARKS PERMITS

Caches may be published within Alaska State Parks! All caches must have the permit number on the inside of the cache along with the cache owner's contact information. On the outside of the cache, you must write "Alaska State Parks Permit #15-KA-1994 Geocache AK" in permanent marking. The cache listing must state "Cache placed under GeocacheAlaska! Park Use Permit #15-KA-1994" within the description section. Before submitting a cache listing within one of the parks, please thoroughly read the complete list of stipulations in the permit, which may be [downloaded](#) from the GeocacheAlaska! website.

## NEWSLETTER INFORMATION

The editors of *Around the State* would like to hear from you. Submit articles or suggestions to [editor@geocachealaska.org](mailto:editor@geocachealaska.org) Previous editions of *Around the State* are now on our website. If you have missed previous newsletters, check out the series [here](#).

\*The [Cache In Trash Out® Logo](#) is a trademark of Groundspeak, Inc. The [Geocaching Logo](#) is a registered trademark of Groundspeak, Inc. Each is used with permission.\*