

GEOCACHE ALASKA! INC.

Exploring the Last Frontier • www.geocachealaska.org



Puzzle Solving FUNdamentals

by

Scott Aleckson
(SSO JOAT)



[Soldotna](#), [Anchorage](#), and
[Cordova](#)

27 October 2011

Tonight's Tantalizing Topics:



- ① What are “**Mystery**” Caches?
- ② Breaking Down the Puzzle Listing
- ③ Puzzle Solving Techniques
- ④ Specific Puzzle Examples
- ⑤ Online Puzzle Resources
- ⑥ **Puzzle Solving Competition!**



What are **Mystery Caches**?



- ❖ AKA “**Puzzle**” or “**Unknown**” cache
- ❖ A Mystery cache involves two “hunts”; completing some type of brain-powered task followed by a hunt for a traditional cache container in the field
- ❖ In most cases, the actual coordinates to the cache are simply hidden or encoded in the cache listing somehow



What are Mystery Caches?



The published coordinates of a Puzzle Cache are NOT for the actual location of the Cache Container! Though they **might** be for a Parking Area or Trailhead.

The actual coordinates should be within 2 miles of the published coordinates.

The published coordinates MAY have something to do with the Puzzle. Look for the Field Puzzle Attribute and hints or instructions in the listing if you are expected to go to the published coordinates to solve for the final cache.



Breaking Down the Listing



- Contemplate the exterior of the quadrilateral parallelogram...
- **Specific word choices matter!**
- Look at everything that the Cache Owner can change or customize on the Cache Listing:



- Cache Name
- Placed By (Always links to CO)
- Date Placed (Must be in past)
- Related Web Page (Hyperlink)
- Background Image
- Bookmark Lists & Trackables
- Short & Long Descriptions (HTML)
- Hints/Spoiler Info (ROT-13 Encoded)
- Additional Waypoints & Images
- Owner Logs (Notes, Maintenance, etc.)

Names, Dates, Links...

Geocaching > [Hide and Seek A Geocache](#) > Geocache Details GC29RXF ▾

Dancing Fall Angies Date: 06/03/2010

A cache by [SSO JOAT](#) Placed By Hidden: 06/03/2010

Size: (Micro) Difficulty: ★★☆☆☆ Terrain: ★★☆☆☆
(1 is easiest, 5 is hardest)

[Related Web Page](#) Published Coordinates

N 60° 29.250 W 151° 05.065 [Other Conversions](#)
UTM: 5V E 605260 N 6707236
E 0.8mi from your home coordinates
In Alaska, United States [View Map](#)

Print:
[No Logs](#) [5 Logs](#) [10 Logs](#) · [Driving Directions](#)

Download: [Read about waypoint downloads](#)


[LOC waypoint file](#) | [GPX file](#) | [Send to My GPS](#) | [Send to My Phone](#)

Attributes

Please note: Use of geocaching.com services is subject to the terms and conditions [in our disclaimer](#).

Navigation

- [log your visit](#)
- [watch listing](#)
- [edit listing](#)
- [edit attributes](#)
- [waypoints](#)
- [upload images](#)
- [archive listing](#)
- [disable listing](#)
- [ignore listing](#)
- [bookmark listing](#)



POWERED BY Google Map data ©2010 Google

24/7

[What are Attributes?](#)


Image Gallery, Maps, Logs...

Find...



- ...other caches [hidden](#) or [found](#) by this user
- ...nearby [caches of this type](#), [that I haven't found](#)
- ...all nearby [caches](#), [that I haven't found](#)
- ...all nearby [waymarks on Waymarking.com](#)
- ...all nearby [benchmarks](#)
- ...nearby [Hotels](#)

For online maps...

- [Geocaching.com Google Map](#)
- [MyTopo Maps](#)
- [Google Maps](#)
- [MapQuest](#)
- [Bing Maps](#)
- [Yahoo Maps](#)
- [Rand McNally](#)
- [MSR Maps \(Formerly Terraserver\)](#)
- [Open Cycle Maps](#)
- [Open Cycle Maps](#)

 [80-Column Printout](#)
[Edit](#)

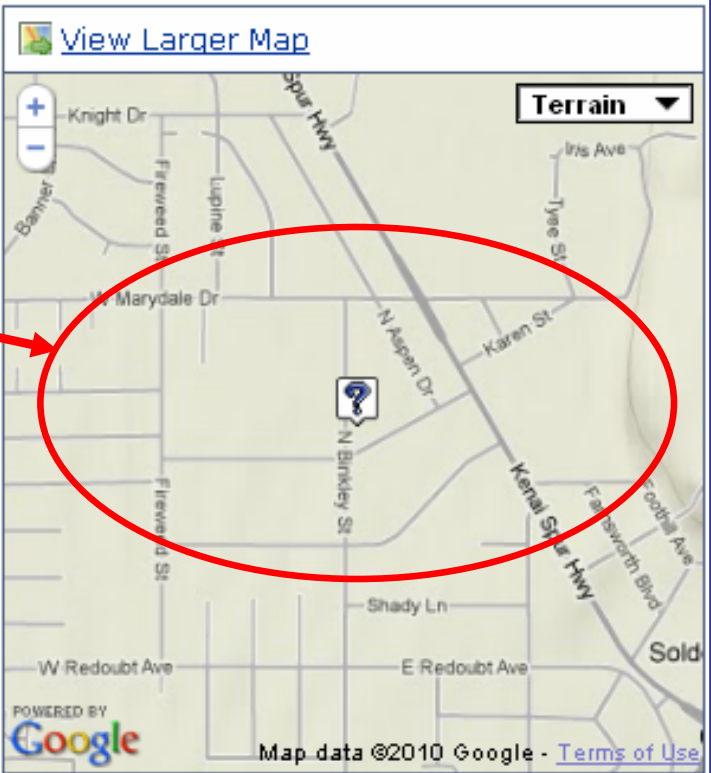
2 Logged Visits · [View the Image Gallery](#)

 1  1

Warning! [Spoilers](#) may be included in the descriptions or links.

Location of Published Coordinates

Images



View Larger Map

Terrain


Map data ©2010 Google · [Terms of Use](#)

[Notes about Printing Maps](#)

Descriptions, Backgrounds, Bookmarks, Trackables...



The Cache is NOT at the Published Coordinates



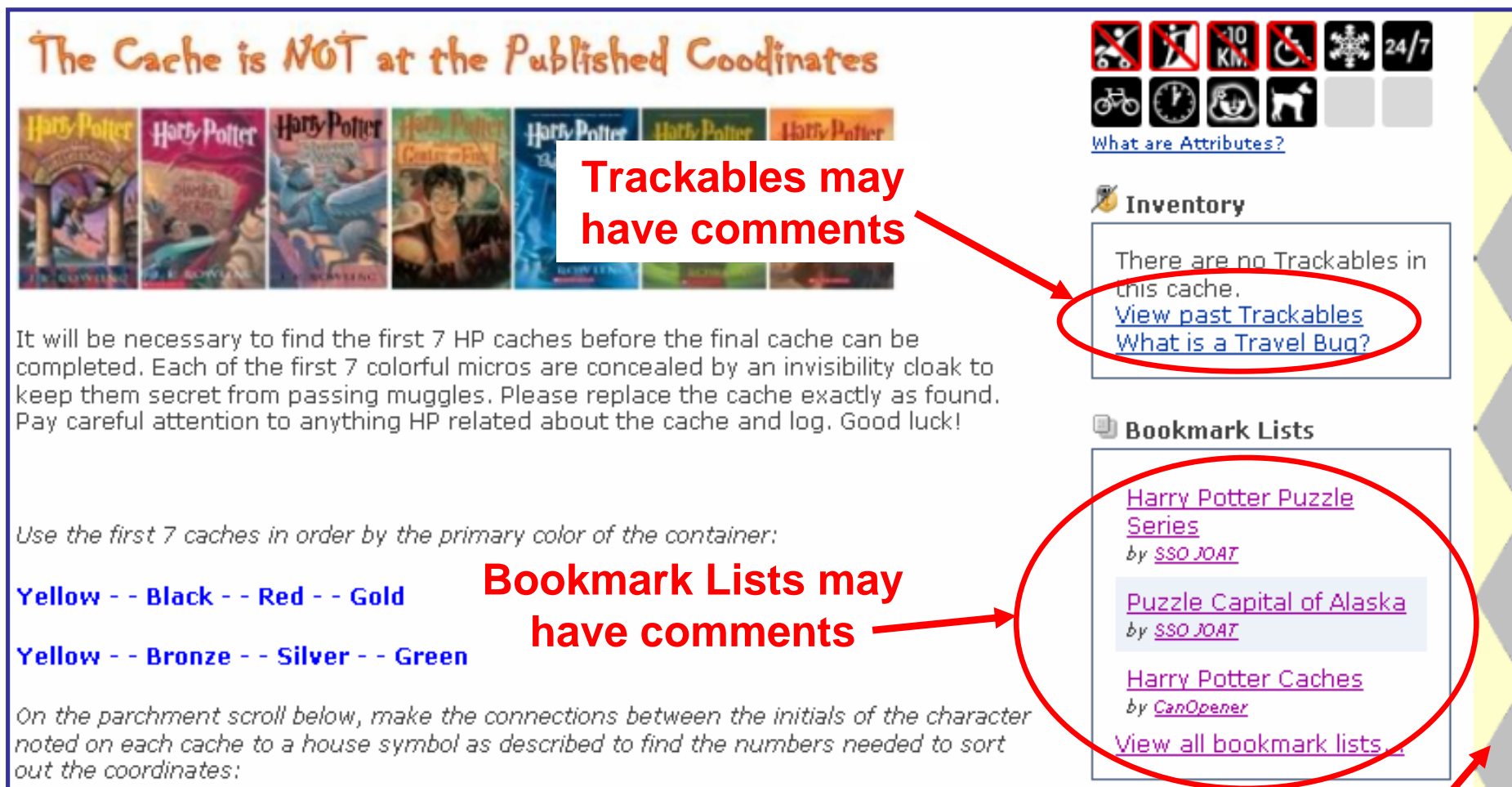
Trackables may have comments

It will be necessary to find the first 7 HP caches before the final cache can be completed. Each of the first 7 colorful micros are concealed by an invisibility cloak to keep them secret from passing muggles. Please replace the cache exactly as found. Pay careful attention to anything HP related about the cache and log. Good luck!

Use the first 7 caches in order by the primary color of the container:

Yellow - - Black - - Red - - Gold
Yellow - - Bronze - - Silver - - Green

On the parchment scroll below, make the connections between the initials of the character noted on each cache to a house symbol as described to find the numbers needed to sort out the coordinates:



Trackables may have comments

Bookmark Lists may have comments

Backgrounds

HTML Source Code



```
<div class="UserSuppliedContent">
    <span id="ct100_ContentBody_ShortDescription"><p>The cache is <b>NOT</b>
at the published coordinates.</p>
<!--For demonstration purposes only, this is a comment or remark line. It can be viewed in the
HTML source code, but is not visible on the Cache Listing when viewed in a browser.-->
</span>

</div>

<br />
<div class="UserSuppliedContent">
    <span id="ct100_ContentBody_LongDescription"><p>Can you help Scooby,
Shaggy, Fred, Velma, and Daphne solve this
mystery? So far in this episode, Velma has found a reference to
somewhere around <i>35R35G35B NW 01' Factory Hill</i> but this clue
has only magnified the difficulty of this case. With your help,
it's a good bet that Scooby will be able to sniff this one out by
the end of the show.</p>
<br />
<img src=
"http://img.geocaching.com/cache/0c5b046d-d655-4512-8371-4f70bd14cef9.jpg"
alt="Zoinks Puzzle" /><br />
</div>
```

Remarks

The HTML source may reveal secrets in the “User Supplied” Sections

Control, eh? Invisible Ink!

Normal view:



You can check your answers for this puzzle on Geochecker.com.

Highlighted:



You can check your answers for this puzzle on Geochecker.com.

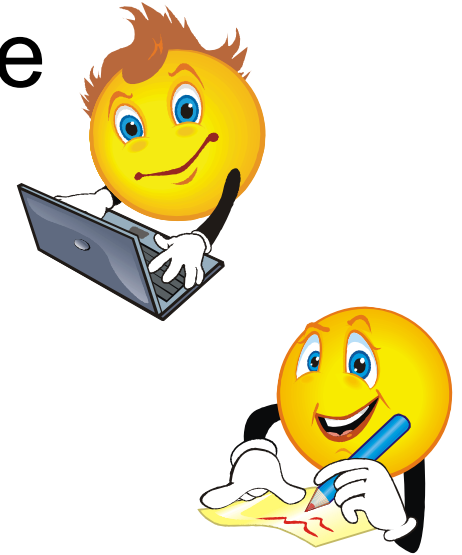
What, did you think I would hide more hints this way? There are plenty of hints hiding around here already.

Ctrl-A

Solving Puzzles



- ⊕ Compile all information about the puzzle from the cache listing
- ⊕ Group the info and try to make connections between elements
- ⊕ Solving a puzzle requires deep thought, research, and lots of scratch paper!
- ⊕ Don't give up! If you don't see the method today, set it down and come back later!



Breaking Things Down



Google Everything



- Thesaurus & Dictionary
- Look up all unusual words
- Specific words are chosen for a purpose as they should help lead to the solution
- An internet search of the right terms may reveal the puzzle's method or solution

Beware of Fluff!



- ☺ Puzzle builders can be very devious and mentally twisted people (*trust me, I know*)
- ☺ Many times, there will be false trails and extraneous information on the listing
- ☺ Often, what looks like the obvious bit of info may in fact be “fluff” that is only there as a distraction from the real puzzle
- ☺ Make sure you don’t get “Tunnel Vision”!

Solving Puzzles



- You know the solution is the **Coordinates**
- Look for groups of items that may represent numbers:
 - 15** digits in **60° 12.345' 150° 67.890'**
 - 10** digits in just the minutes portion
 - 6** digits in just the fractional minutes
- *Example:* If the puzzle has 10 images on it, each image could represent a number for the minutes portion of the coordinates

Whole or Parts?



- The solution to the puzzle may or may not include the entire DMM coordinates of the cache
- Sometimes you'll see the published coordinates are simply “rounded down” to the whole minute
- This often means the solution is the 3 digits to the right of the decimal in the minutes portion of the coordinates, so you're looking for 6 numbers
- Published Coords: **N60° 14.000' W155° 26.000'**
- The answer might be: **60° 14.523' 155° 26.419'** with the numbers **523** and **419** in the puzzle

Give These a Try!



Frank, Igor, Victor, and Elvira got on the Transylvanian West heading to Ordu for the annual Turkish Holiday Regatta where many of Eastern Europe's finest were gathering.



Acme sold 162,948 Super Widgets during the second quarter of 2011. Fixed quarterly production costs were \$275,212 with a per widget manufacturing cost of \$250. The net profit from widget sales for the second quarter was \$27,263,000. How much did each widget sell for?

The Solutions!



This sentence sounds pretty “fluffy”, right?
So, take a look at some of the oddities, for instance, note the capitalization used...



Frank, **I**gor, **V**ictor, and **E**lvira got on the
Transylvanian **W**est heading to **O**rdu for the
annual **T**urkish **H**oliday **R**egatta where many of
Eastern **E**urope’s finest were gathering.



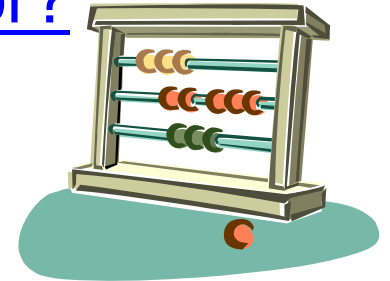
Will you look at that! **FIVE TWO THREE**



The Solutions!



Acme sold **162,948** Super Widgets during the second quarter of 2011. Fixed quarterly production costs were **\$275,212** with a per widget manufacturing cost of **\$250**. The net profit from widget sales for the second quarter was **\$27,263,000**. How much did each widget sell for?



Show of hands... **Who Loves Math?**

$162,948 \times \$250 = \$40,737,000$ total unit production cost
Add in $\$275,212$ fixed and $\$27,263,000$ net = $\$68,275,212$



Divide by 162,948 widgets for **\$419** each!
Yes, there are other mathematical ways to get this solution

Coord Formats



- Watch out for alternate Coordinate Formats, especially on math problems!
- A solution of **60.55123** could be:
- In our usual **DMM**, it is **60° 55.123'**
- If it is **DD**, then **60.55123°** or **60° 33.074'**
- If it is **DMS**, then **60° 55' 12.3''** becomes **60° 55.205'**

Writing Out Coordinates



- **Warning!** We don't always use numbers!
- This: **N 60° 29.190' W 151° 07.715'**
- Becomes this:

North sixty degrees twenty nine point
one hundred ninety minutes west one
hundred fifty one degrees seven point
seven hundred fifteen minutes

Encoding Coords



To help hide the words being encrypted, we will sometimes break the words into groups of perhaps 3, 4, or 5 letters like this:

**nort hsix tyde gree stwe ntyn inep oint
oneh undr edni nety minu tesw esto nehu
ndre dfif tyon edeg rees seve npoi ntse
venh undr edfi ftee nmin utes**

Codes & Ciphers



- You're already familiar with the basic substitution cipher called the Caesar Shift
- Every cache page has the ROT13 Cipher listed on it:



Decryption Key

A|B|C|D|E|F|G|H|I|J|K|L|M

N|O|P|Q|R|S|T|U|V|W|X|Y|Z

(letter above equals below, and vice versa)

Caesar

For your
eyes only



- ✘ The 26 letters of the alphabet can be shifted any number of positions
- ✘ If you were to shift 2 places, then $A=C$, $B=D$, and $C=E$, and so on through $Z=B$
- ✘ While a 13 place shift gives $A=N$ and $N=A$, any other shift will not result in the same switch both ways

Codes & Ciphers



After running the previous coordinates through a simple Caesar Shift, we get this:

**YZCE SDTI EJOP RCPP DEHP YEJY
TYP A ZTYE ZYPS FYOC POYT YPEJ
XTYF EPDH PDEZ YPSF YOCP OQTQ
EJZY POPR CPPD DPGP YAZT YEDP
GPYS FYOC POQT QEPP YXTY FE PD**

Reversed Shift



- A simple variation on the Caesar Shift
- Start with the regular alphabet, but rather than shifting the encoded line in Caesar style, reverse it from Z to A, like this:

ABCDEFGHIJKLMNOPQRSTUVWXYZ
ZYXWVUTSRQPONMLKJIHGFEDCBA



Substitution Ciphers



- ♣ Anything can be used to represent the letters of the alphabet or even the ten digits which make up all numbers
- ♪ It can be pictures or symbols of anything, often puzzlers will just use strange Fonts
- ♀ The true puzzle is just finding out the key to decode the message back to plain text



Image Manipulation



- ✦ *Steganography* – Messages hidden inside the computer code of the image itself
- ✦ Save all images to your computer
- ✦ Look at the Image Properties
- ✦ Open image with a Photo Editor
- ✦ Zoom in and look all over the image for signs of editing, hints, codes, or even the coordinates themselves



Image Manipulation

**It's easy to hide
stuff in Images**

**Do you see the
Coordinates?**



Image Manipulation

Zoom In and
there they are...

To make life even
more interesting,
imagine if we
encoded the
coordinates first.
(hint... we have)



Use the Internet!



- The only way to get better at puzzle solving is to practice!
- This Blog posts a Geocaching Puzzle of the Day, every day from all over the USA: geocachingpuzzleoftheday.blogspot.com
- Everyone needs to work through the first 9 caches of the [Puzzle Solving 101](#) series

Solving Puzzles



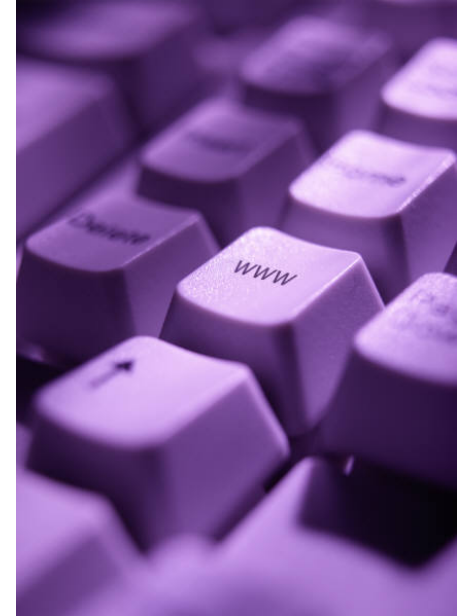
A few “Rules” about solving puzzles...

- ✓ Never ask for help with a puzzle on public internet forums (e.g. Groundspeak forums)
- ✓ Never post the solution to a puzzle or give the final location anywhere on the internet
- ✓ Never post any hints about how to solve the puzzle in your online logs – If you do post any hints, expect your log to be deleted
- ✓ Finding the final cache without actually solving the puzzle doesn’t justify a “find”

Resources



- GS Knowledge Books: <http://support.groundspeak.com/>
- Purple Hell: <http://www.purplehell.com/>
- Rumkin Cipher Tools: <http://rumkin.com/tools/cipher/>
- Omniglot Writing: <http://www.omniglot.com/>
- Puzzlehead Blog: <http://www.puzzlehead.org/>
- Online Substitution Cipher Solver:
<http://25yearsofprogramming.com/fun/ciphers.htm>
- Parmstro's Puzzle Guide: <http://parmstro.weebly.com/solving-puzzles.html>
- Florida's Puzzle Solving 101 Cache Series by ePeterso2:
<http://www.geocaching.com/bookmarks/view.aspx?guid=37f3d8f3-62ba-40ac-b0ef-901807ba9c98>
- Puzzle Capital of Alaska Bookmark List for the Central Kenai Peninsula:
<http://www.geocaching.com/bookmarks/view.aspx?guid=3e9b65ac-aebb-465f-9cb1-095a64292485>
- GeocacheAlaska! Forums:
<http://geocachealaska.proboards.com/>



COMPETITION!!!



- ◆ I've hidden a practice Puzzle for you to try and Solve!
- ◆ The First To Solve (FTS) will get a nice prize from GeocacheAlaska!, which will be mailed to them upon successful completion.
- ◆ A PDF copy of this presentation will be posted to the GeocacheAlaska! website's Education page around 9:30pm tonight. You MUST download a copy of the full-size version to access the hidden puzzle. Part of the puzzle is in this presentation, and the rest is out on the internet. The solution includes instructions on how to prove that you have solved the puzzle. Follow them exactly!
- ◆ I will post a description of how to solve this puzzle as a note to each event listing after we have a FTS logged, so that everyone can learn.
- ◆ Important note about this puzzle... nearly every image in this presentation is hyperlinked! *Most* take you to places to learn more about the topic at hand and really have little to do with this puzzle.
- ◆ Go to the next slide when you're ready to start. Enjoy!

THE MISSION:



The board it was hidden from members and all, upon which was written this too secret mission. But one way in, the only chain to be laid, by the Chair on The River, it adorns his Ed page. Two words together, but this time they're cut, one to the secret, when registered up. The key to get in lies in most caches, freely exchanged, but mostly trash. On last year's eve of Kamehameha Day, the Capra did tell, how this slang could be swell. Now that you're in, you've just begun, so roll up your sleeves and get this task done. The first one to post, the prize is their right, permission we give to be a big gloat & question the sanity of SSO JOAT!