

# GEOCACHE ALASKA! Inc.

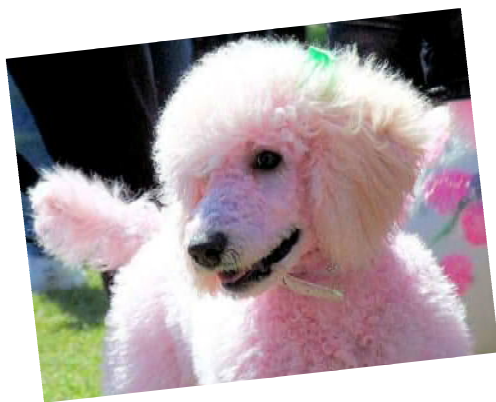
Exploring the Last Frontier • [www.geocachealaska.org](http://www.geocachealaska.org)



## Signature Items and Pathtags FUNdamentals

presented by

Joanne Langseth  
([poodle chic](#))



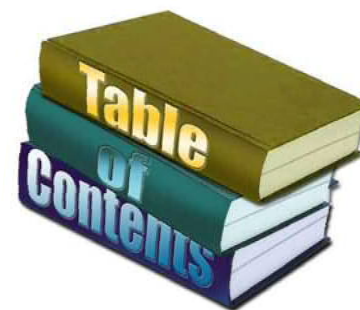
**Fairbanks** with Anchorage and  
the State of Alaska via WebEx

21 March 2013

# *Tonight's Topics:*



- ▶ What are Signature Items?
- ▶ Examples of Signature Items
- ▶ Pathtag Basics
- ▶ Designing Pathtags



# What are Signature Items?



- ❖ Personal items that are left in caches as a way of saying, “I was here” (in addition to signing the log).
- ❖ Can be just about any small trinket, which can be generic or customized to reflect the cacher
- ❖ These are usually left as “SWAG” in a geocache; unlike trackable items such as geocoins and travel bugs, signature items become standard trade items
- ❖ Many cachers drop their signature item in every cache that has the room and frequently do not take anything in exchange for the item as it is just a sign of their visit
- ❖ You may trade SWAG for signature items left in a cache

# Examples of Signature Items



- Laminated Business Cards (*must be waterproof*)
- Customized Baseball-style Trading Cards
- Customized Poker Chips
- Customized Wooden Nickels
- Customized Bottle Caps
- Customized Buttons
- Small toys or key-chain style trinkets





# PathTags

## Pathtag Basics and Design

[www.pathtags.com](http://www.pathtags.com)

So you found a little coin  
with a hole in it.....

What does this mean?



# What Are Pathtags?



- Pathtags are personal trading items. Used most often in Geocaching, they are also very handy for Scouting, Military and Promotional use. The online gallery displays thousands of tags which have been designed by individuals and produced by Pathtags.com.
- The physical Pathtag integrates with an online community to enable collecting and trading of tags with others from all over the world.

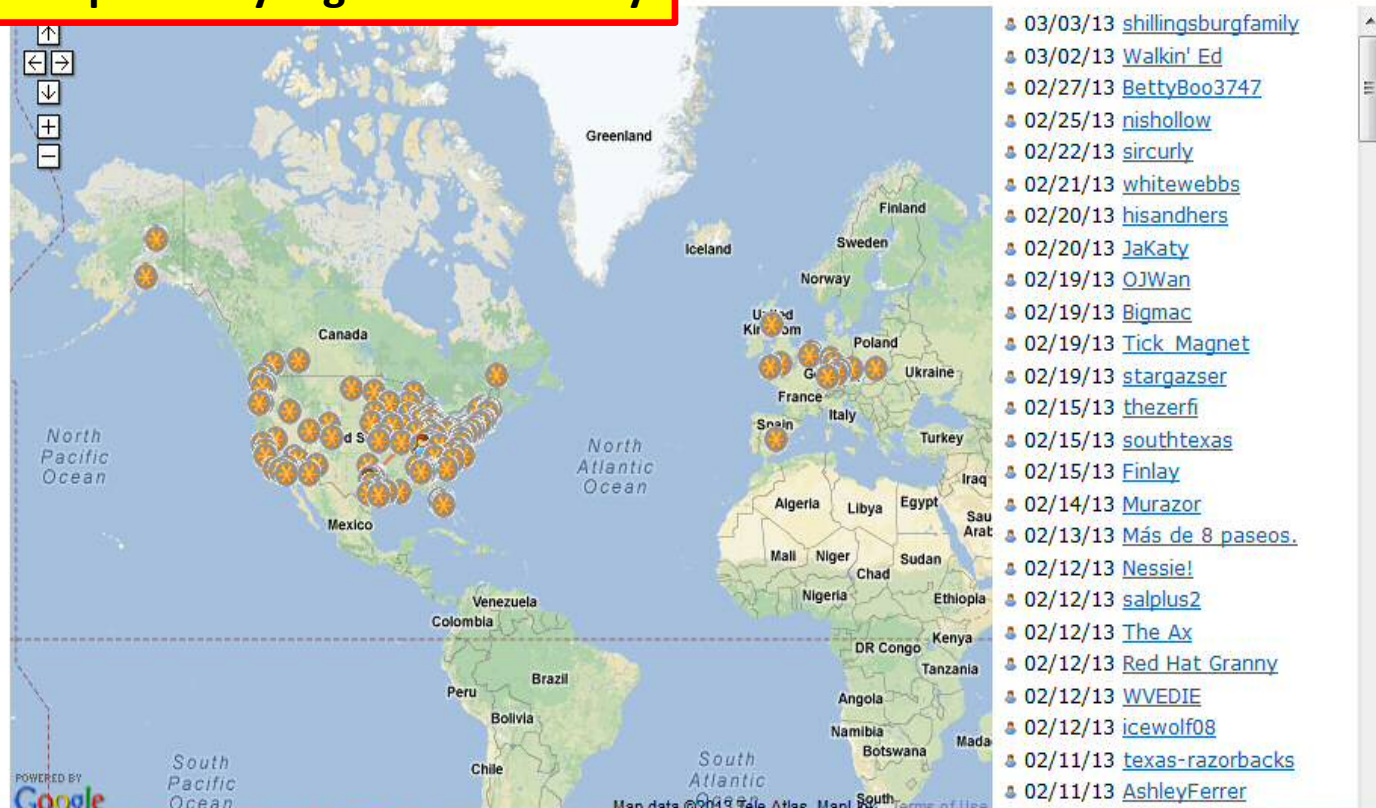


### Map For Tag 23868 aka "Cache the Booty"

250 of this tag have been made. This tag has been logged into 161 collections. Tag icons (📍) show where your tag was found. Red lines connect a tag to a person (👤) if the person's home location is different than where the tag was found. Click tag icons to view more information. Use your mouse wheel or the + and - icons to zoom.



**This is an example of my tag and its activity**

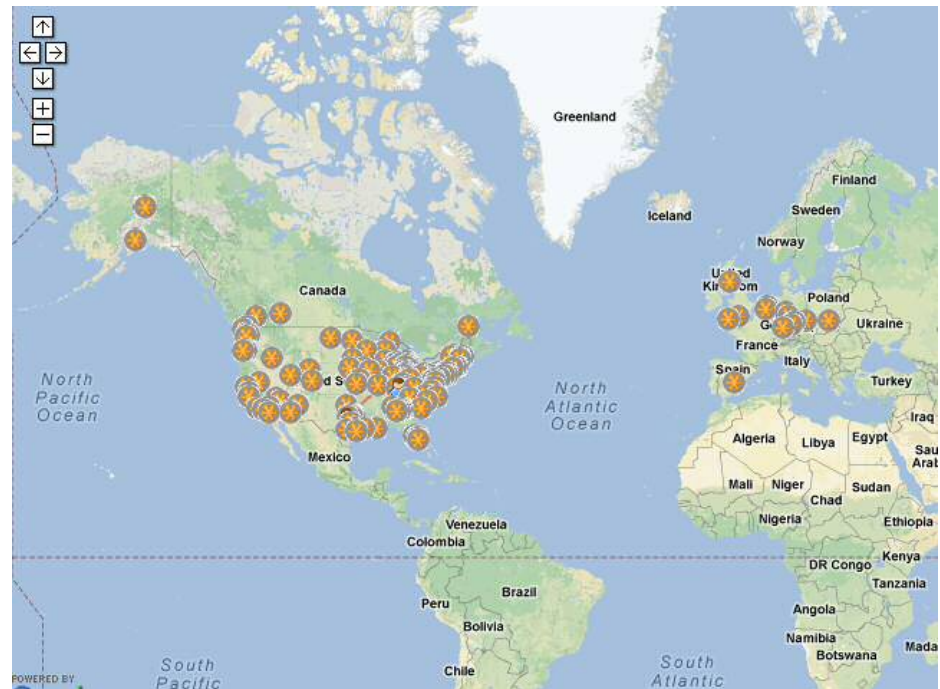


# The online Pathtag Community is fun

When someone logs your tag online, you will be able to see where they found it, where they live, and link into their profile.

It is free to create an account.

To create an account go to the account activation page.



[www.pathtags.com/community/newuser.php](http://www.pathtags.com/community/newuser.php)





# PathTags



## Create Your Free Account

### How We Feel About Your Email

We cherish your trust. Using your email, we deliver only notices initiated by other users and directly relevant to your participation here (trade notices, etc.) Even though we think tags are spiffy, you will never get an email advertisement from us sent via your account here unless you opt in.

### User Information

Screen Name:

Email:

Email Again:

Your Location:

Update

We have guessed at your location, you can change it by filling in the field above the map and clicking "Update".  
Use City/State, Zipcode, or Street Address to zero in on your actual location.

POWERED BY Google

[Terms of Use](#)

<http://www.pathtags.com/community/newuser.php>

This is the page you will create an account on

### Legal Stuff

- I agree to abide by the [terms of use](#) of this website.
- I have read and understand the [privacy policy](#) of this website.
- We respect the privacy and rights of our users of all ages. We require our users read and understand our [Age Policy](#). Further, you agree you are over 13 years of age or have obtained the consent of you parent/guardian to utilize the

Firefox | PATHTAGS! - Home - Who have you cro... | www.pathtags.com/index.php | Back Forward | Reload Zoom Out Zoom In Stop Copy Paste Print | Google

Most Visited PMS Color Chart Electronics, Cars, Fashi... The Pathtag Portal Me... PATHTAGS! - poodle c... Geocaching > Geocac... Web Mail - Login (1) Facebook Joanne Langseth / Pint...

HOME BUY TAGS TAG GALLERY LOG TAGS NOW! MY STUFF SITE NAV SOCIALIZE LOGIN

**P** Pathtags! **ags**

- Unsure Which? Click Here!
- Order a New Starter Kit
- Order A Refill Kit
- Order A Tag With Changes
- Buy PathCash (Gift Certificates)
- Join The Pathtag Club!
- Starter Kit Price Calculator

**Designing a Tag**  
Designing your own tag is fun and easy! Feeling creative and adventurous and want tips and templates? Need

**What are Pathtags?**  
Found a shiny Pathtag and wondering what to do with it? The short answer: Log it here (click the icon in the top) and

**The Community**  
Pathtags are more than a pretty face, as a customer you get access to our Community features too. Since 2006 our community has enhanced the value of Pathtags by allowing you to connect with friends, collect, trade, and track your Pathtags.

**When looking at the home page you will see a row of icons that will help you navigate through the site as shown in the few slides.**



**Under "MY STUFF" you will be able find a dropdown menu that will help you manager your pathtag collection.**



# PathTag



- Tag Gallery
- Search Pathtags.com
- Contact Us / Get Support
- Add To Wishlist By Serial
- Spread The Word!
- Video Tutorials

## Design A Tag

Designing your own tag is fun and easy! Feeling creative and adventurous and want tips and templates? Need "professional help" from one of our Design Partners? You can get all that and more on our design page. Learn tips and tricks and find easy links to our helpful, affordable design pros.

[Read More](#)

## What Are Pathtags?

Found a shiny Pathtag and wondering what to do with it? The short answer: Log it here (click the icon in the top) and you are free to keep it for your collection! Now that you found out you know you can't suppress your curiosity. Click the read more link below to learn about the wonder world of Pathtags.

[Read More](#)

## The Community

Pathtags are more than a pretty face, as a customer you get access to our Community features too. Since 2006 our community has enhanced the value of

**Under the SITE NAV icon you will find the path to other helpful site locations. INCLUDING VIDEO TUTORIALS!**

# Online Video Tutorials *(YouTube)*



- [Creating A User](#)
- [Ordering A Starter Kit](#)
- [Fast Labels Tutorial](#)
- [Wishlist Trading Tutorial](#)
- [Editing A Tag Profile and Name](#)
- [Multiple Tag Logging](#)
- [Initiating a Trade](#)
- [Redeeming and Using PathCash](#)
- [Logging Pathtags](#)
- [Using Tag Editor Version 2](#)



# PathTags

- Pathtags.com Forums
- Facebook Page
- Google Plus



## Design A Tag

Designing your own tag is fun and easy!  
Feeling creative and adventurous and

## ? What Are Pathtags?

Found a shiny Pathtag and wondering what to do with it? The short answer:

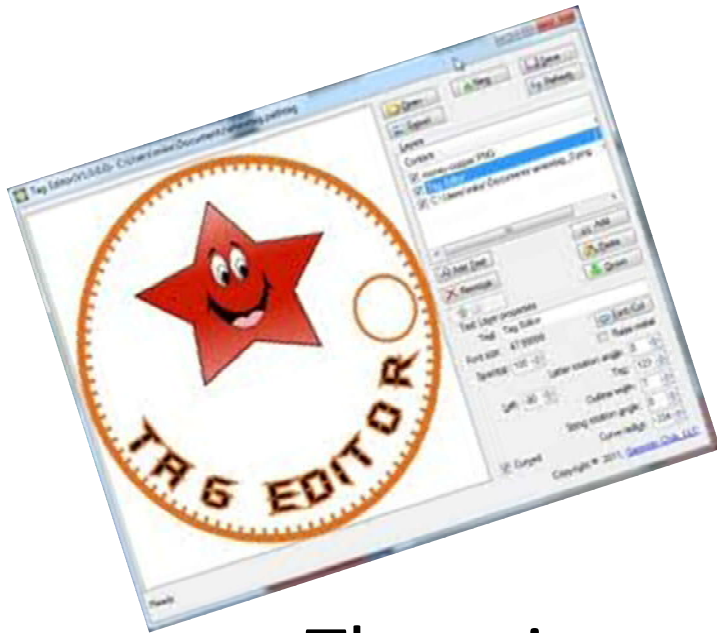
## The Community

Pathtags are more than a pretty face, as a customer you get access to our

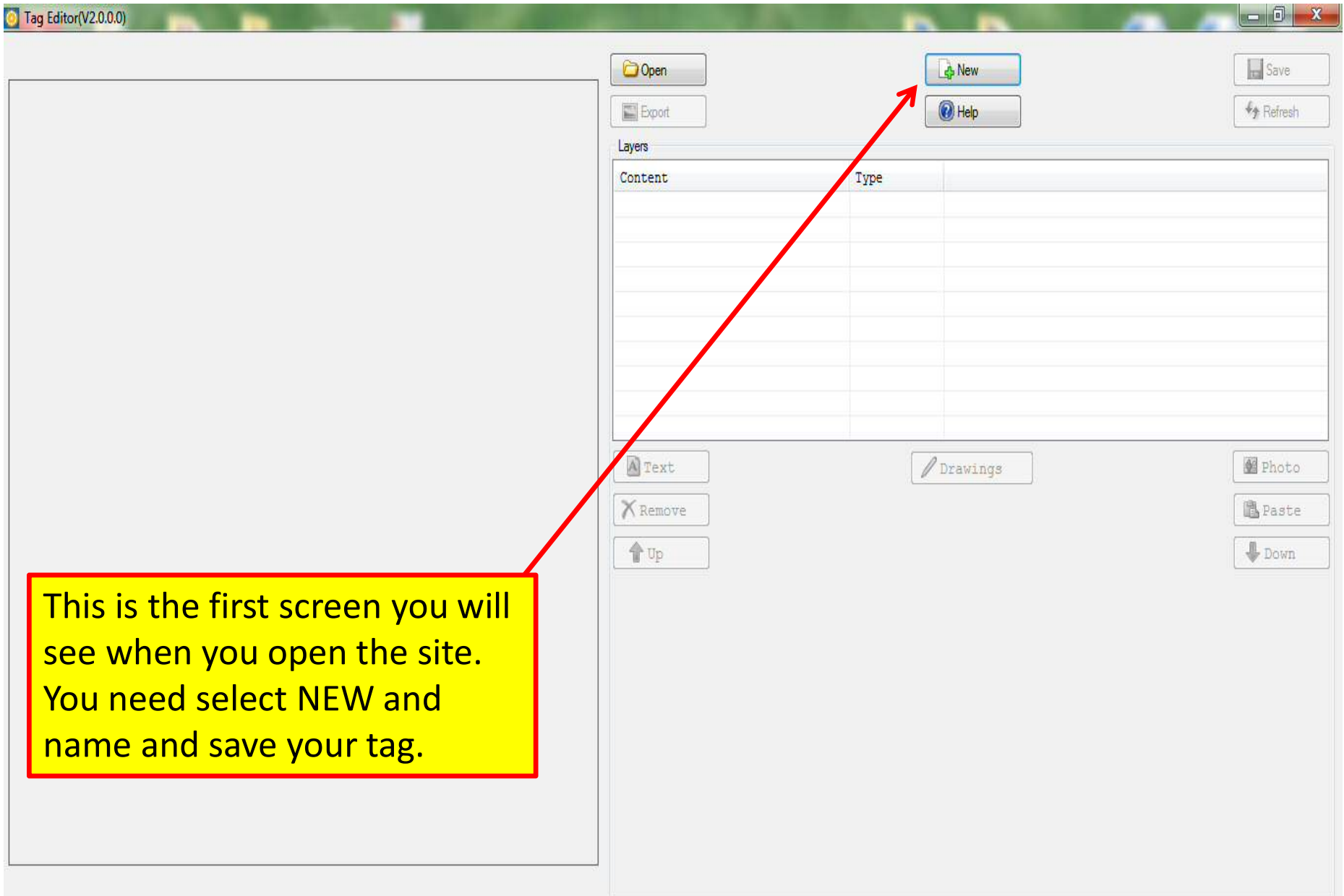
**The Forums is an area where members can communicate with each other and participate in contests, conversations and games. This is a quick rundown on exploring the site.**

...e 2006 our  
...value of  
...connect with  
...ck your

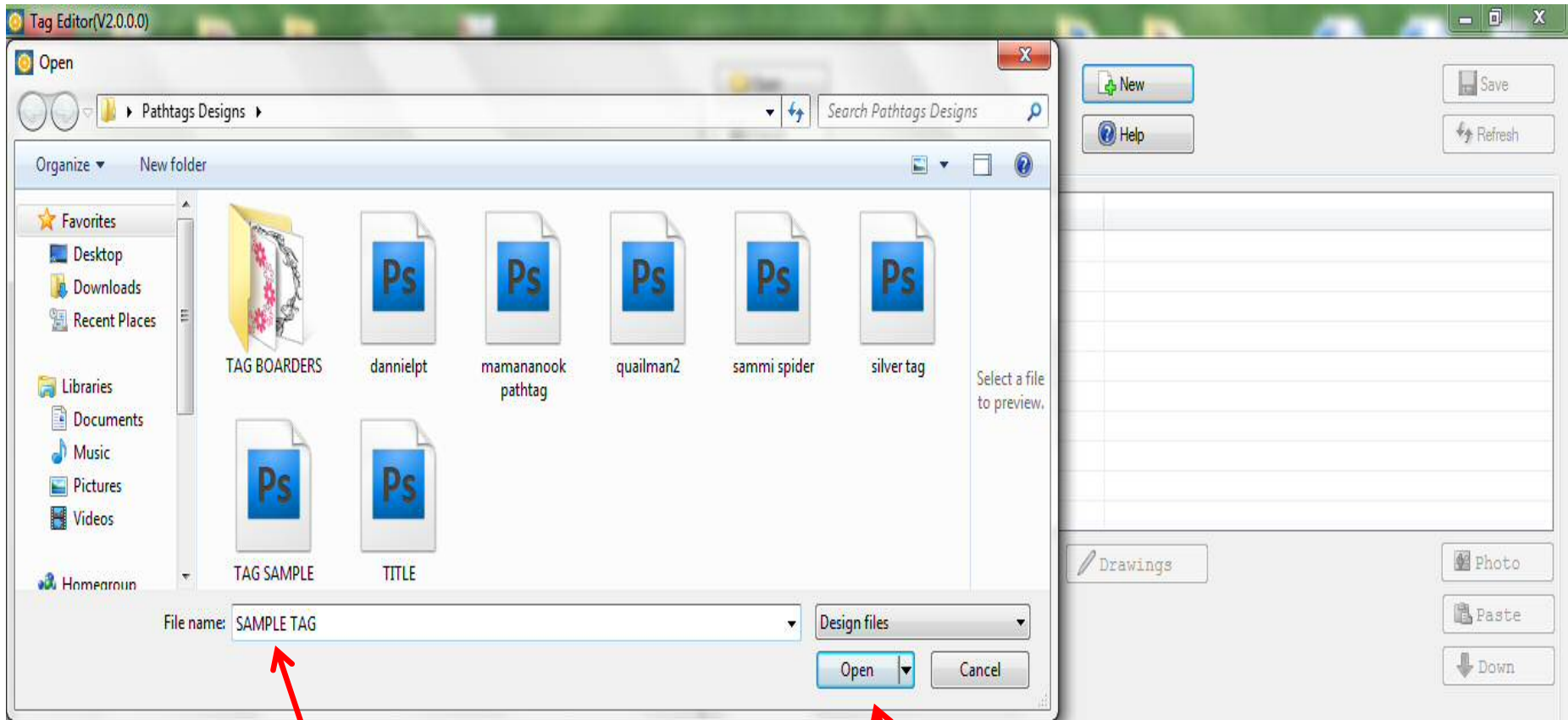
# Using The Pathtag Tag Editor Version 2



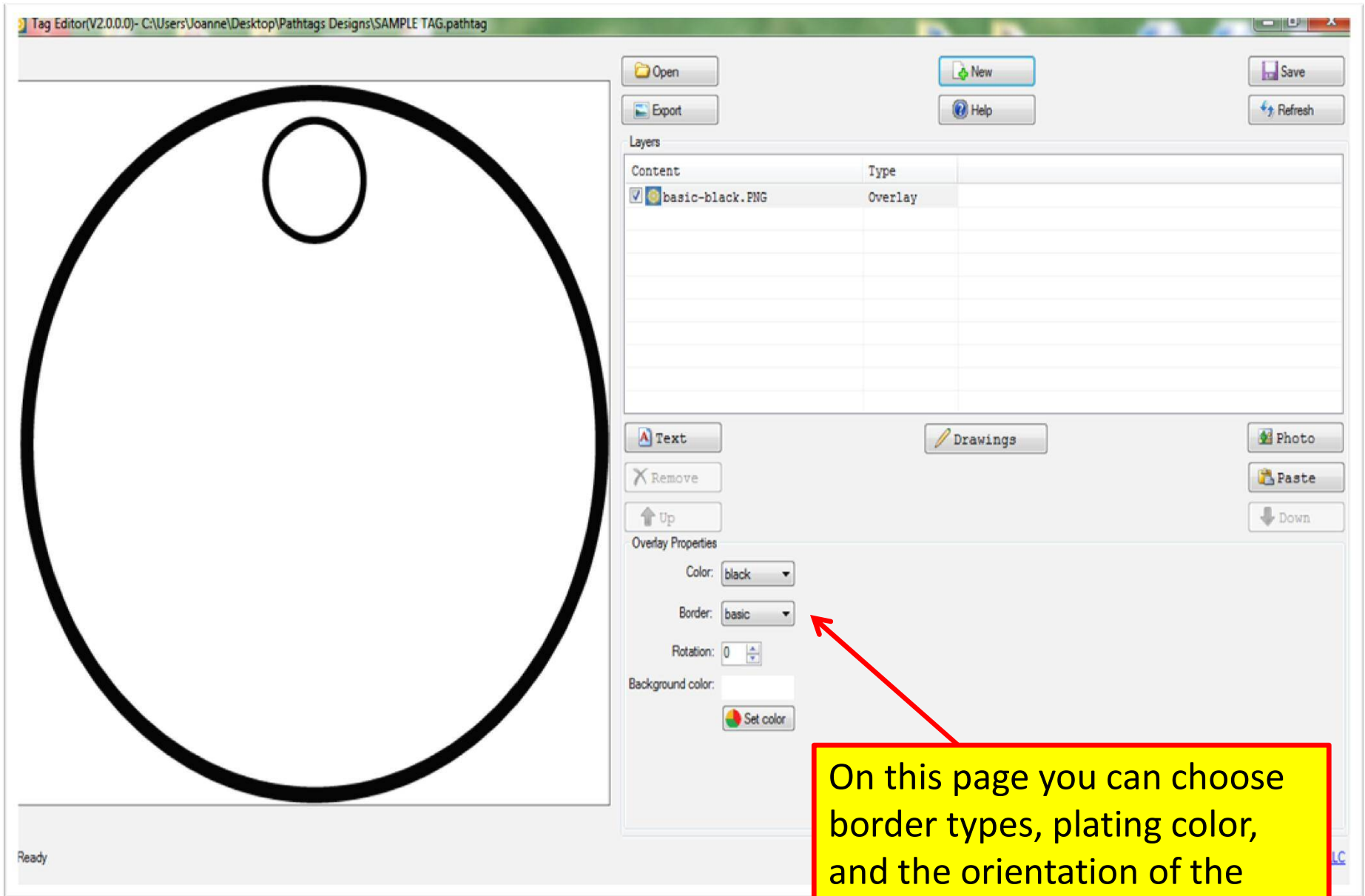
- There is a great free design tool called, Tag Editor. You can download it free from the web site (login required).
- We will look at the process of creating you own tag using the Tag Editor.



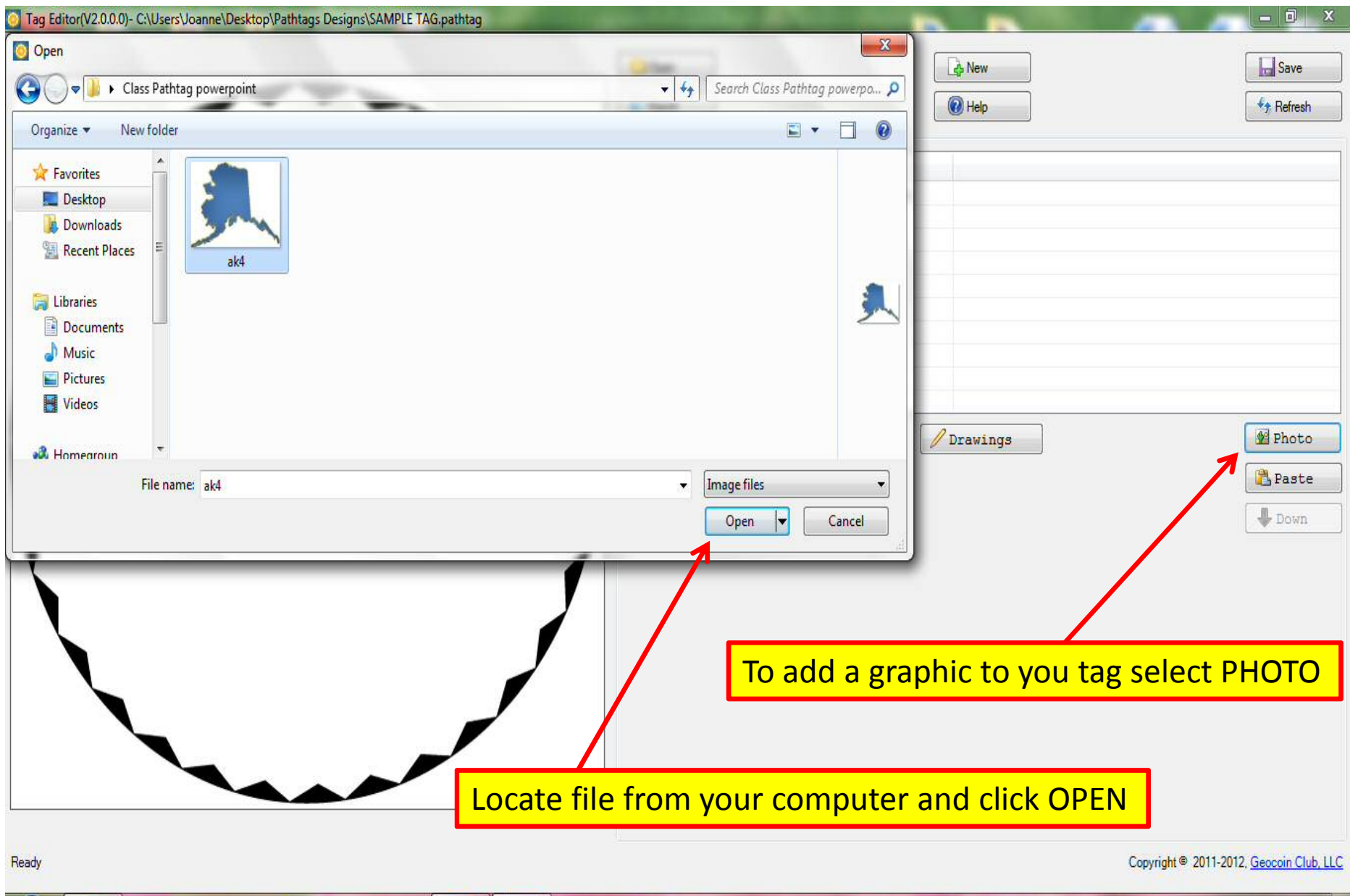




Name the tag in the "file name" field, than click open and the tag editor will open up ready for you to use.



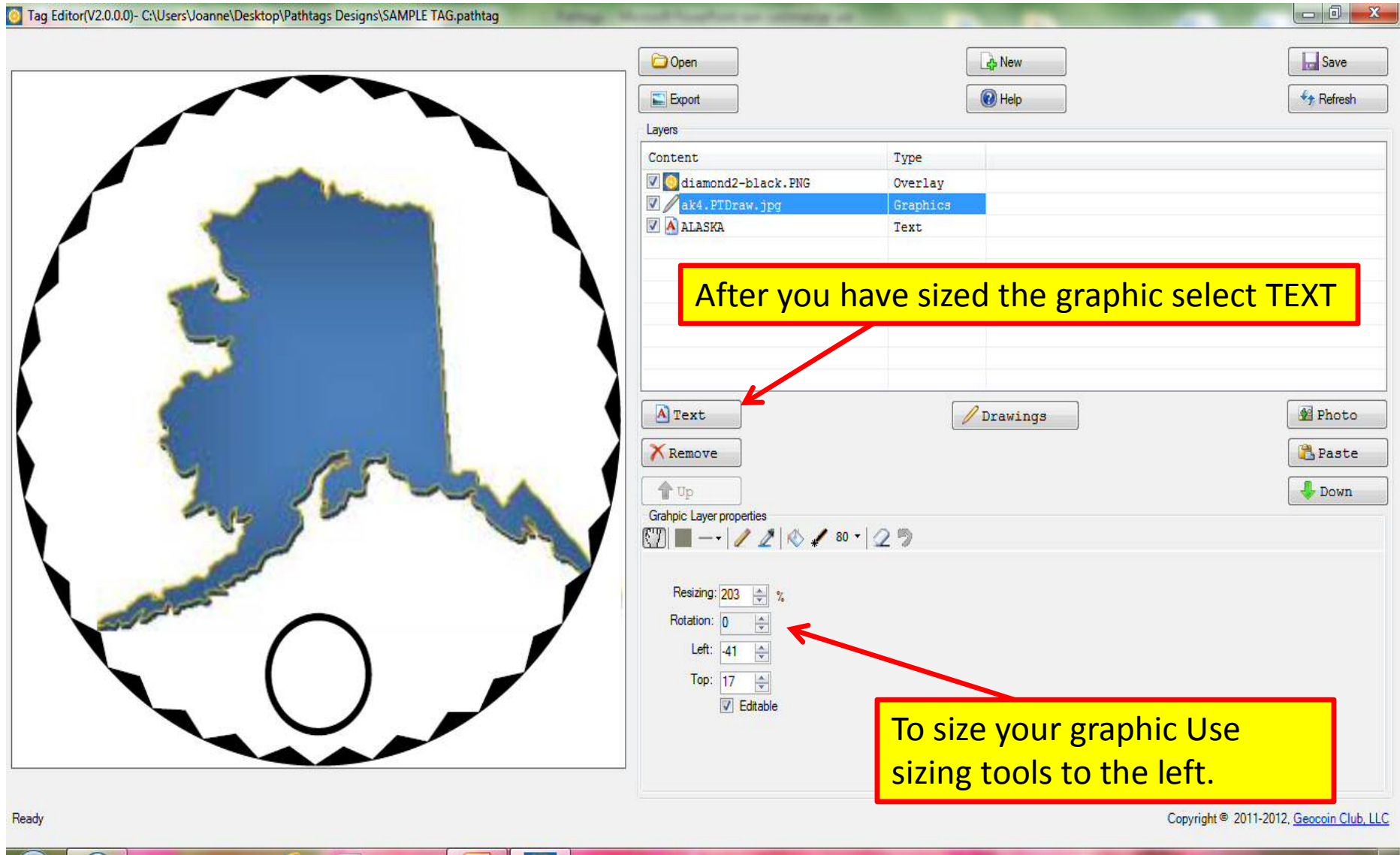
On this page you can choose border types, plating color, and the orientation of the hole placement.



To add a graphic to you tag select PHOTO

Locate file from your computer and click OPEN

Tag Editor(V2.0.0.0)- C:\Users\Joanne\Desktop\Pathtags Designs\SAMPLE TAG.pathtag



The screenshot shows the Tag Editor interface. On the left is a circular tag design featuring a blue map of Alaska on a white background with a black scalloped border. A small black circle is at the bottom. On the right is a control panel with a 'Layers' table, a 'Graphic Layer properties' section, and various tool buttons.

Content	Type
<input checked="" type="checkbox"/> diamond2-black.PNG	Overlay
<input checked="" type="checkbox"/> ak4.PIDraw.jpg	Graphics
<input checked="" type="checkbox"/> ALASKA	Text

Graphic Layer properties

Resizing: 203 %  
Rotation: 0  
Left: -41  
Top: 17  
 Editable

Buttons: Open, New, Save, Export, Help, Refresh, Text, Drawings, Photo, Paste, Down, Remove, Up

Ready

Copyright © 2011-2012, Geocoin Club, LLC

After you have sized the graphic select TEXT

To size your graphic Use sizing tools to the left.



Open New Save  
Export Help Refresh

Content	Type
<input checked="" type="checkbox"/> diamond2-black.PNG	Overlay
<input checked="" type="checkbox"/> ak4.PTDraw.jpg	Graphics
<input checked="" type="checkbox"/> ALASKA	Text

To add Text click TEXT

Text Drawings Photo  
Remove Paste  
Up Down

Text layer properties  
Text: ALASKA  
Font size: 35  
Spacing: 60  
Left: 0

Font/Color  
 Raise metal  
Letter rotation angle: 0  
Top: 0  
Outline width: 7  
Rotation angle: 0  
Curve radius: -301

**IMPORTANT: You cannot see the text unless you move the LAYER up one! This application works with layers like other photo editing programs.**

Ready 2012, Geocoin Club, LLC



Open New Save  
Export Help Refresh

Layers

Content	Type
<input checked="" type="checkbox"/> diamond2-black.PNG	Overlay
<input checked="" type="checkbox"/> ALASKA	Text
<input checked="" type="checkbox"/> ak4.PTDraw.jpg	Graphics

You can toggle between layers to edit you tag if needed

Text Drawings Photo  
Remove Paste  
Up Down

Text Layer properties  
Text: ALASKA  
Font size: 72  
Spacing: 100

Curved

Font/Color  
 Raise metal  
Letter rotation angle: 0  
Top: -243  
Outline width: 7  
String rotation angle: 0  
Curve radius: 400

Select text font, size & color here

To rotate text, select Curved



Open New Save  
Export Help Refresh

Content	Type
<input checked="" type="checkbox"/> diamond2-black.PNG	Overlay
<input checked="" type="checkbox"/> ALASKA	Text
<input checked="" type="checkbox"/> ak4.PTDraw.jpg	Graphics
<input checked="" type="checkbox"/> FreeHand 1.PTDraw.png	Graphics

Text Drawings Photo  
Remove Paste  
Up Down

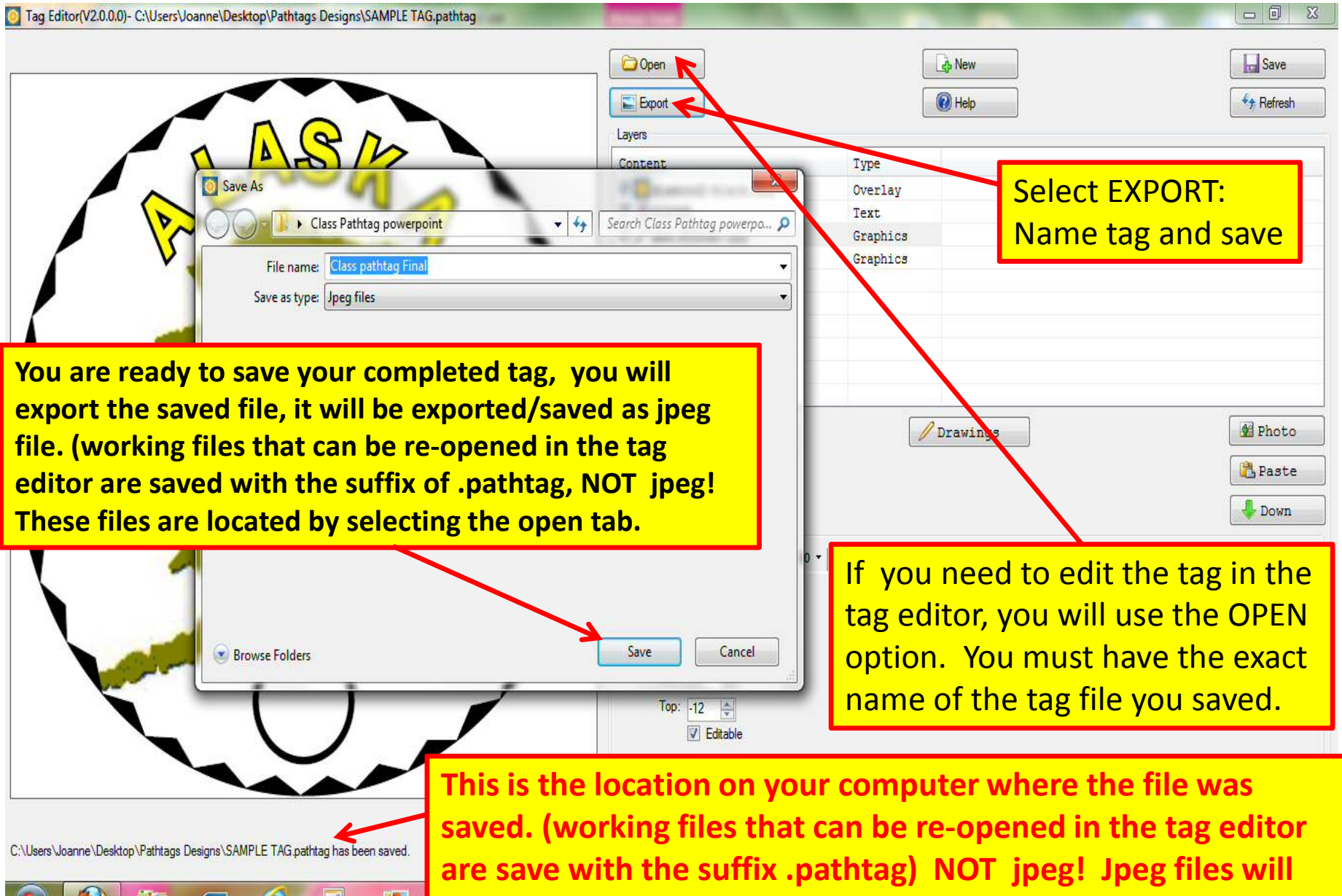
Graphic Layer properties

Resizing: 203 %  
Rotation: 0  
Left: -37  
Top: -12  
 Editable

I have selected the DRAWINGS option (below)  
I then selected the graphic layer  
I used the selection tool to select the state

I then changed the color box and  
used the fill option to make it green.

By experimenting with the different tools you can learn how to create awesome tags with out having to spend extra money on software applications.



Select EXPORT:  
Name tag and save

You are ready to save your completed tag, you will export the saved file, it will be exported/saved as jpeg file. (working files that can be re-opened in the tag editor are saved with the suffix of .pathtag, NOT jpeg! These files are located by selecting the open tab.

If you need to edit the tag in the tag editor, you will use the OPEN option. You must have the exact name of the tag file you saved.

This is the location on your computer where the file was saved. (working files that can be re-opened in the tag editor are save with the suffix .pathtag) NOT jpeg! Jpeg files will not open in the tag editor. A jpeg image can be uploaded using the graphic option like you would upload an image.





# PathTags



You do not have to use the Tag Editor to create a pathtag. You can use any editing tool.

Photo Shop, Gimp, & Paint... will all work. You just need to save the final art in a jpeg format to upload when purchasing your tag and submitting your design.

To best use the site I advise relaxing with a cup of coffee and just explore the different areas within the site. It is a user friendly site and the video tutorials are great!

# GeocacheAlaska!



**Sourdough Members: Please Renew your membership for the 2013 caching year!**

Our online Forums have been completely redesigned with a major software upgrade. If you haven't been to our forums lately, drop in and check it out. Join in the discussions!

**GeocacheAlaska! needs your help with on our standing committees. Join any committee of interest in the Forums!**

# Resources



- GS Knowledge Books: [support.groundspeak.com](http://support.groundspeak.com)
- GeocacheAlaska! Forums: [geocachealaska.proboards.com](http://geocachealaska.proboards.com)
- GeocacheAlaska! Website: [www.geocachealaska.org](http://www.geocachealaska.org)
- Pathtags Website: [www.pathtags.com](http://www.pathtags.com)
- Pathtags Forums: [forums.pathtags.com/forum.php](http://forums.pathtags.com/forum.php)
- Join or Renew GeocacheAlaska! Sourdough Membership: [www.geocachealaska.org/join\\_geocachealaska.htm](http://www.geocachealaska.org/join_geocachealaska.htm)