

Around The State



November 2014

IN THIS ISSUE

[GeocacheAlaska! Updates](#)

[Caching Tricks, Tips, & Tools](#)

[Caching Travelogues](#)

[GeocacheAlaska! General Information](#)



MARK YOUR CALENDAR

[Geocaching for Fun - SCS EduVent](#), November 11, 6:30pm, Soldotna

[How to Build and Hide a Geocache - SCS EduVent](#), November 12,
6:30pm, Soldotna

[Pocket Query Creation and Filtering II - ANC](#), November 20, 6:47pm,
Anchorage

[Pocket Query Creation and Filtering II - FAI](#), November 20, 6:47pm,
Fairbanks

[Pocket Query Creation and Filtering II - KTN](#), November 20, 6:47pm,
Ketchikan

[2nd to the LAST CHANCE of the CENTURY: 12/13/14](#),
December 13, 10:11am, Anchorage

[LAST CHANCE OF THE CENTURY](#), December 13,
10:11pm, Anchorage

[12-13-14 @ 15:16 for 17 mintues and 18 seconds](#), December 13,
3:16pm, Anchorage

[2014 3rd Annual HOLIDAY BASH](#), December 14, 2pm, Fairbanks

[10th Annual Geofest](#), December 19, 5:30pm, Anchorage



Photo credit: Trish Fredieu / AKLoisandClark
He Who Ships Shall Receive [GCVB83](#)

GeocacheAlaska! Updates

GeocacheAlaska! 2015 Board Member Elections

The GeocacheAlaska! 2015 Nominating Committee of [Cameron Gilchrist](#)/AlaskaCariboozer (chair), Dana Rosso/DR-AK, Sean McErlane/Mac_5115, and Robert Burton/burtonsinak, and are happy to announce the slate of candidates for the GeocacheAlaska! 2015 Board of Directors. The voting period will be November 1-November 15, 2014 and votes will be tabulated by electronic ballot hosted on SurveyMonkey.com.

This 2015 election is the first election that fully implements the 2014 by-law change that staggered term limits to improve GeocacheAlaska! business continuity. This ballot includes candidates for Vice President, Treasurer, and two Members at Large for terms that will run January 1, 2015, through December 31, 2016. The terms for President (Wesley Skinner/Northwes), Secretary (Michael Malvick/Ladybug Kids), Webmaster (Scott Aleckson/SSO JOAT) and two Members at Large (Robert Burton/burtonsinak, Ericka Rud/AKRUD) run through December 31, 2015.

Candidates for the 2015 GeocacheAlaska! Board of Directors are:

Vice President, Dana Rosso / [DR-AK](#)



As a member of GeocacheAlaska! currently serving on the board as a member at large I know what it takes to ensure that the board is successful in its endeavors. My current term of member at large will be expiring at the end of this year and I would like to opportunity to continue to serve our great caching community as your next Vice President of GeocacheAlaska!

Treasurer, Michael Malvick / [Ladybug Kids](#)



I began geocaching in 2004 and have been involved at various levels in the communities of Fairbanks, Valdez and Anchorage. I was a member of the steering committee that drafted the original by-laws for GeocacheAlaska! and have been on the Board of Directors since 2009 holding positions of Webmaster (2009-2010), Vice-President (2011, 2013), and Secretary (2012, 2014).

I have brokered Land Manager agreements in Fairbanks and Anchorage to keep geocaching alive on public lands in those communities. I am also the Groundspeak Volunteer Cache Reviewer for Alaska, Hawaii, and several dozen countries that don't yet have a dedicated reviewer and the

EarthCache Reviewer for Alaska, Hawaii, and other areas as required.

In 2015, I will work with the Board of Directors to grow the GeocacheAlaska! membership, offer a quality program of educational events, expand the number and types of geofellowship events (Indian Summer, Geofest, Campouts, etc.), and foster relationships with a broader array of Land Managers across Alaska. In addition to developing geocaching friendly land use policies, my goal is to encourage additional Land Manager caching programs such as the USFWS Blue Goose GeoTour, which GeocacheAlaska! helped launch in October 2012 and would have been repeated in 2013 except for the US Government shutdown.

Specifically, as Treasurer, I will meet my duties as defined in the GeocacheAlaska! [by-laws](#) that include but are not limited to accountability for all income and expenses, keeping accurate financial records, managing all GeocacheAlaska! electronic transaction accounts, maintaining a ledger describing GeocacheAlaska! property, managing membership renewals and filing required annual paperwork to maintain nonprofit status. I will leverage my extensive experience as an industry cost center manager with accountability for mid-sized budgets and past experience serving as Treasurer for other non-profit organizations to be successful in this position.

I look forward to continuing to serve Alaskan geocachers.

Members-at-Large (2 will be elected to terms running through December 31, 2016)

Andrew Harrell / [Op_Beardo](#)



I am relatively new to caching compared to some of the "vets"!!! I intend to cache, cache, and do some more caching!!! I am moving right along in numbers and various cache hides. I'm constantly learning new and ever more interesting things as far as geocaching goes! I would like to think my favorite part of geocaching is the adventure and CITO (the people are ok too).

As a member of the Geocache Alaska board, I would be able to help newer and uninitiated cachers to further understand just exactly what it is that we are doing, and why exactly we feel the need to put waders on and push 3/4 of a mile into a swamp (further than that in some instances)! I also would like to make Geocache Alaska more well known in the community as a whole!

Thank you for your consideration and more importantly all your caches!!!
Op_Beardo OUT!!!

GeocacheAlaska! Updates

GeocacheAlaska! 2015 Board Member Elections

Members at Large (2 will be elected to terms running through December 31, 2016)

Sean Gaither / [ftl-ak](#)



I would like to bring my energy and excitement to help geocache Alaska as a member at large. I am currently the carrier of the store and enjoy seeing everyone at events and sharing stories. I have been a member since 2008 and am ready to move into a bigger role to help the organization.

Trish Fredieu / [AKLoisandClark](#)



My name is Trish Fredieu better known as Lois of Ak Lois and Clark. We started caching in 2010 and have been having a good time at it ever since. Our caching name originated with Darrel's (Clark) brother. He came to Alaska for a year and we used to drag him everywhere. He would not be a good cacher

unless they were at his house. After a while he stated calling us Lewis and Clark since we were always out driving around and exploring. Soon he would be weary even if we were going to Walmart since we might shop in Fairbanks. LOL. The ironic thing is he actually found our first cache. So our name was made. Our slogan is "We would rather be lost than found at home." Just like everyone says, caching takes me to places I might not ever see. It can make a drive from A to B much more interesting, educational and just plain fun.

We are casual cachers but really have fun doing it. I don't think I will ever snowshoe 6 miles to a cache but I really enjoy the many aspects of caching. Earthcaches are a favorite. One of the good things about geocaching is that everyone can enjoy it. My mother is 89 years old and she has cached. Most of my friends, family and even employees have had to endure a cache moment. My favorite was when a friend said one day "Let's go get one of those things." The geopups love caching as I am sure most do.

I am running for Member at Large because I want to become more involved in Geocache Alaska. I believe I can bring something to the board. I have a lot of experience in event coordination and am ready and willing to help. I think the

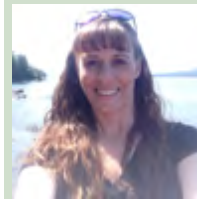
experience of learning about land management and all the aspects of geocaching we do not see will be a great experience. When you are new you do not realize the time that goes into getting park permits, setting up events etc.

Thanks for the time to consider AK Lois for Member at Large. I think I should make some cheesy campaign promise like nanos for everyone. Or no more nanos depending on your perspective. My champagne promise is to bring fun to geocaching. All caches are created equal some are just more evil than other. I love this game.

GeocacheAlaska! Board Member Introductions

Board appointed Member-at-Large through December 2015

Ericka Rud / AKRUD



My name is Ericka Rud (Akrud) and I live in Ketchikan Alaska. I have lived in Alaska most of my life and have been a cacher since July 2012. I however am not alone in my caching addiction. My husband-Akwrench, Son-alaskantman and daughter-aksusuhigirl are also active cachers. We use caching as a way to experience and see things we may not normally see and to get outdoors and get moving. In the last year we have had a lot of firsts: We have climbed mountains, hiked multiple trails, visited a Civil War Fort, Did our first GeoTour, Made a day trip just to collect several other states, did our first ever Wherigo & Earth Cache, bought good rain gear & footwear, all in the name of Geocaching.

I accepted this appointment to the board so that Southeast Alaska was represented in GeocacheAlaska. I also hope to learn and be a part of lots of other fun events and to contribute something meaningful to the organization.

GeocacheAlaska! Updates

President's Corner

By Wes Skinner / NorthWes



Please take time to read about the election process for your Board of Directors, posted elsewhere in this newsletter. It's critical to the future of our organization to have a diversity of talents on our Board, and your vote helps establish the team which moves this organization ahead for 2015.

Interior and Southcentral Alaska have experienced their first snowfalls, which reminds us it's time to pay attention to trail user assignments for the winter season. During summertime, almost all trails support a wide range of user groups. However, in the wintertime some trails are dedicated to specific use - such as dog mushing or cross-country skiing. Considerable money and labor is invested in establishing safe trail conditions for these specific uses. Persons who use these dedicated trails in an improper fashion create safety hazards for skiers and dog teams.

Further, improper use gives other user groups (such as geocachers) a bad reputation as persons who aren't able to share public lands with other user groups. Obey trail assignment signs, and learn how to maneuver across Alaska's winter terrain via skis, dog team or snowshoes. Winter is a great time to get outdoors and keep on caching, as long as you understand how to fit in safely on our excellent winter trail system!

Membership Survey Coming Soon!

By Scott Aleckson / SSO JOAT

GeocacheAlaska! will be opening an online survey in the coming week to solicit member feedback on our organization. We have done this periodically to get your feedback on how your geocaching organization is doing. It gives you a great opportunity to let the Board of Directors know what's important to you. In addition to rating things that the club is involved in, you will have ample opportunity to provide your personalized feedback to the Board. This will help guide the 2015 Board of Directors in where to focus our limited resources. The final touches are being completed to the survey right now and a link to the survey will be sent out to our membership via email and through our social media outlets.

Top Tens: Alaskan Cacher's Caching Achievements

By Scott Aleckson / SSO JOAT

This month's Top Ten list of Alaskan Cacher's Caching Achievements goes to the Alaskan Geocachers with the most Alaskan Cache Finds in One Month. Note that we have two ties at 4th and 5th as well as 9th and 10th place. What are the chances? As with all our Top Ten lists, only Alaskan caches are counted here, so we are not counting your vacation caches outside.

- #1 [Polgera](#) = 267
- #2 [akwhodini](#) = 239
- #3 [jonnygeoseed](#) = 223
- #4 [Capra Hircus](#) = 218 (tie)
- #5 [capsheldon](#) = 218 (tie)
- #6 [AkJo19](#) = 216
- #7 [cavyguy](#) = 207
- #8 [Malcore](#) = 194
- #9 [SantaBro](#) = 190 (tie)
- #10 [Cache Critter](#) = 190 (tie)

Look for another Top Ten list next month.

2014 Birds of Alaska Geocoins and Pathtags are Now Available

By Scott Aleckson / SSO JOAT

All in limited edition, our 2014 Spectacled Eider geocoins in satin gold or satin silver and our set of five Birds of Alaska Pathtags are available via our online store. They are selling fast and your chance to own any of these items will soon be gone. Visit our website at <http://www.geocachealaska.org/alaskageocoins.htm> to see the coins and pathtags. A link to enter our store appears at the top of that page. Sourdough members in good standing get a discount on any purchases. Read the instructions on the sales page for the link to obtain your special members-only pricing.



GeocacheAlaska! Updates

GeocacheAlaska! 2015 Calendar Photo Contest Voting!

By Scott Aleckson / SSO JOAT

The Calendar Photo Contest closed and we received a total of 140 entries. These are being worked over by the Webmaster and will appear on our website photo gallery shortly. Now we will need everyone to help us out with the fun part. As soon as the photo gallery is uploaded to our website, we will distribute a link to an online survey via email and our social media outlets.



Everyone is encouraged to take the survey and after looking through the photos in each category, enter your votes for your favorite shots. The voting will only be open for about a week. We will announce the winners and arrange them into a 2015 calendar that will be available for purchase. At the end of the survey will be instructions on how to pre-purchase a calendar as we will only be ordering enough calendars to cover those who will commit to the purchase up front. The calendars will still be available for additional purchases direct from the manufacturer and we will have instructions on how to do so posted at our online store.

We can still put additional photos into the holiday slide show for GeoFest. If you have any geocaching photos, regardless of when or where they were taken, that you would like to contribute to the slide show, please send them to PhotoContest@GeocacheAlaska.org. Please use the tag **[SLIDE SHOW]** as the Subject Line of your message to help our email system sort your entries directly to our inbox instead of junking them to the SPAM box where they could get lost in the clutter.

The slide show will be shown at the GeoFest event in Anchorage, but we will make it available to other holiday events around the state. Anyone hosting a social event that has the ability to play a DVD for your attendees may request a copy of the slide show DVD by sending an email request to the photocontest email account. Expect the slide show to be ready around the first week of December and allow time for us to mail you a copy of the disc.

GeocacheAlaska! is still seeking a bad purple Trek Tag

By Scott Aleckson / SSO JOAT

Sometime in July or August, a purple Trek Tag was purchased at an event, most likely in Anchorage. This Trek Tag has a bad tracking number and must not be activated. We will replace the purchased Tag with a new one as soon as we find the buyer. The tag is purple (magenta) and has a white wolf against a dark moon with a white band under the word "Alaska" and the tracking number. This etching pattern is different than all the previous tags we have sold. However, the next batch of tags has arrived and it uses this different etching pattern, so once those tags start selling, you'll no longer be able to pick out that one bad tag by this method. The bad tag has two 5's and a 7 in the tracking number. If you have a tag that matches this description, please contact [SSO JOAT](mailto:SSOJOAT@geocachealaska.org) immediately so we can replace that tag with a good one, free of charge, and we'll toss in a set of 2013 Pathtags for your trouble!



GeocacheAlaska! Updates

GeocacheAlaska! Thanks Those Who Give Back!



GeocacheAlaska! publically recognizes and thanks those cachers who choose the GeocacheAlaska! "Give Back" back for their personal pathtags. The below list depicts all the pathtags produced since April 2013 that have a public profile on pathtags.com and feature the GeocacheAlaska! back.

Ten cents for each tag produced with this custom back is deposited in GeocacheAlaska!'s PathCash account. These funds are then used to offset some of the production costs for GeocacheAlaska! signature pathtags. When you design a pathtag, please consider showing your Alaskan pride and choose the GeocacheAlaska! Give Back pathtag back.

Serial #	Tag Name	Creator	Image
25812	My Dream Vacation	subaru11	
26948	AlaskaCariboozer & SnowySwan #1	5SnowyBous	
27495	All Your Cache	Fred and Izzy	
28104	Hate Mosquito - Red	Henryandkendra	
29943	Futbol! - JMC Club	Capra Hircus	
29973	Frutiferous - JMC Club	Capra Hircus	
30522	getatm/alaskageocacher	getatm	
30554	ReidRio & Cheese&Sprinkles 1st Pathtag	5SnowyBous	

30770	5SnowyBous Signature Tag #1	5SnowyBous	
31147	AlaskaCariboozer & SnowySwan Signature Tag #2	5SnowyBous	
31415	getatm geocaches Eklutna Lake, Alaska	getatm	
32070	getatm Cached Here/Bear	getatm	
32686	getatm geocaches with views of Mt. Susitna/Sleeping Lady	getatm	
33039	Alaska License Plate/getatm	getatm	
33150	getatm goes steampunk	getatm	

Caching Travelogues

200 Finds!

By Andrew Harrell / Op_Beardo

I was on the way to 200 when biggriz said “Hey beardo wanna do some caching”. To which I quickly responded “Yea man sounds good”. 10 minutes or so go by and sure enough the Volkswagen caching wagon pulls up and away we go! A few p&g caches go by and the man suggests “Beardo, I see you brought your waders. Let’s go after Jewel Lake” ([GCMT9G](#)). As we approach the parking area I killed a jackcat hide in short order while biggriz booted up.

Then as we were deciding where we should begin our journey through swamp country I quickly discovered that the area I chose first wasn’t the way to approach as I went knee deep in duck poo! Now that we have adjusted our attack method we bushwacked for a while until we reached a clearing. Nervous from reports of bear in the area by a homeowner at a cache around the way I prepared my weapon and we trudged along. Hopping from one patch of swamp grass to another we progressed deeper and deeper into the bog! After what seemed like forever the coveted GZ was upon us! Down with the gps units and the hunt really began! Sloshing left and right we dissected the area and then eureka!!! The ammo can presented itself to us! In a flurry of cache-drunk excitement our stamps went to work on the log book! What’s this the book is damp!?!? Surely we brought backup logs.... Alas neither of us came prepared. A solution lies within the cache extra zip lock bags, of course and with a quick ziiipp we returned the cache to its hiding spot (a little bit off the ground)!



Now for the return trip which was uneventful until the last 20 feet. Bushwacking again a step in the wrong spot left me nearly hanging from a branch and struggling to keep my boots! Up, down, sideways, a little shimmy and shake, we emerged from the woods dry and proud! Now back to the Volkswagen caching wagon for a celebratory beverage and away we went on to the next adventure!

A big thank you to Mr Northwes for placing the cache and making my 200th find a memorable one!

Following Robert E. Lee’s Footsteps

By Michael Malvick / Ladybug Kids

After pursuing caches in the southernmost Texas counties in July, Houston cachers Kirbydox, Rich and Lola, and I turned our attention to the counties northwest of San Antonio to set the three of them up to complete the [Texas County Challenge](#) in September, move me to 79 (out of 254) Texas Counties cached, and continue progress toward completing the [Texas Cemetery Cache Challenge](#) and the [I’ve Been Everywhere Challenge--Texas](#). For the second month in a row, we tackled a route of 800 or more miles in 26 or fewer hours with this one taking us through 26 counties and visiting three of the “I’ve Been Everywhere” (IBET) communities.

This trip, my flights from Anchorage to Dallas to San Antonio were on time and I climbed into Rich’s geo-Liberty within minutes of arriving at the gate. I already had the Nuvi programmed for the first part of the route, so we were rolling immediately for Kendall County cache [Robert E. Lee slept here ...zzz...ZZZ...zzz](#) placed outside a sandstone building sporting a sign claiming “Gen. Robert E. Lee stayed here.” From there, we visited the [Faux Bois](#) cache placed on the grounds of a convent. The faux bois was indeed fake, being made of concrete, but one could climb to the top for a view of Boerne, and it was large enough to conceal a cache large enough to accept several trackables.



From Boerne, we continued on to Bandera Cemetery in Bandera County and spent time admiring the century-old unusually ornate headstones while hunting a pair of discretely placed caches. Then we stopped at the [Banderas Fossils](#) Earthcache and found some very well-preserved specimens in the Highway 173 roadcut, including a large snail and

Caching Travelogues



several clams. Next up, we visited Kerrville, our first IBET community of the day to score a three-fer by finding a cache in the Glen Rest Cemetery in Kerrville of Kerr County.

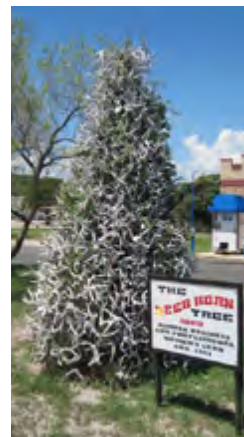
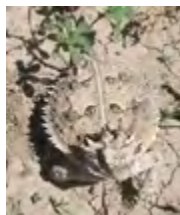


The Texas heat had affected the adhesive holding the cache together, so it took a bit of effort to retrieve all the parts, sign the log, and reassemble everything. From there, we passed through Gillespie County, making a quick stop to find a cache at an I-10 pull-out sheltered by the shade of a walnut tree. We then re-entered Kerr County to traverse over to Real County and just *had* to stop at the intriguingly named [HM: YO Mama](#) cache placed at the entrance of the YO Ranch. “HM” stood for the historical marker that explained how Civil War veteran Charles Schreiner raised sheep and goats, eventually driving a total of 300,000 Texas longhorns to market and raising



enough goats to earn Kerrville the slogan “mohair capital of the world.” After reading that, I started watching for *Capra Hircus* relaxing under one of the many oak trees in the area.

We quickly cached our way through Real and Edwards Counties and made our way up to Junction in Kimble County to log our second three-fer of the day with a cemetery in a new IBET community inside our seventh county of the day. While hunting down the third of three caches we found in the cemetery, Lola



nearly stepped on a nice-sized horned lizard which I scooped up for closer inspection. The cute little guy had a club foot, but his size indicated it didn't slow him down much when hunting insects. The Texans were impressed we'd actually found one because they are apparently becoming increasingly rare. Next up was [Look at the horns on that one](#) cache which was placed near a Christmas tree shaped stack of deer antlers. Then we hopped back onto I-10 for a quick out and back run into Sutton County before heading north into Menard County at Ft. McKavett, finding a



couple of caches in Schleicher County, and visiting a cemetery in Tom Green County. In Coke County, we visited the cemetery for the ghost town of Mule Creek and were struck by red soil and the simplicity of the headstones. It was also in Mule Creek that we realized just how rummy we were getting from our mutually early mornings when no one argued that one of the clouds drifting past looked like one of Kirbydox's namesake dachshunds.



With twelve counties visited and sunset coming in just a couple of hours, we turned east to begin our run to Llano, our goal for the evening. We visited our first virtual cache of the day at [Ballinger Book Worm](#) and visited a few more historical markers on our way through McColloch and Coleman Counties. We watched a wonderful sunset during this stretch of our journey, not realizing that our night driving would be full of things that potentially could go bump in the night. We passed dozens of deer as we drive along the back roads of Brown, Mills, San Saba, and Mason Counties, but the most interesting nocturnal encounter was coming nose to bumper with a wild hog that veered

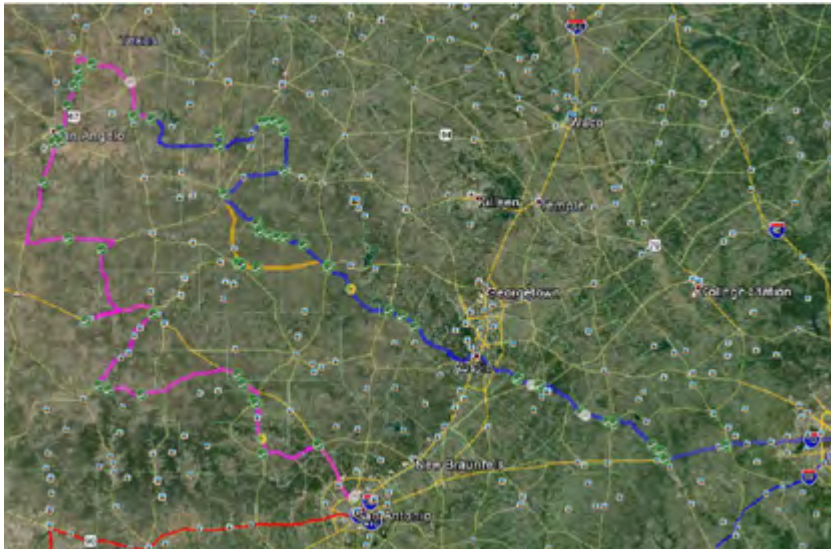


Caching Travelogues

out of the way at the last minute only to carom of the fence on the side of the road and come straight back at the side of the Liberty. Then, just as we crossed a cattle guard, we pulled abreast of very large bull that didn't take kindly to having his photo taken and made threatening movements in our direction before Rich's foot found the gas pedal. We safely reached Llano with no new scratches on the georig and quickly checked into our rooms and for a brief sleep, content with twenty new counties, two new IBET communities, and several new cemetery caches logged.



The next morning, we were up prior dawn so we could find a few caches and arrive at Kirbydox's monthly [Alien Invasion DT Houston](#) Event on time. The early start paid dividends with six more counties and a couple of cemeteries cached along with a pair of increasingly rare virtual caches logged. We arrived in time for lunch and socializing with a couple dozen local cachers, many of whom walked from their nearby jobs for a welcome break. Stories were swapped and plans for the next county run were begun.



200 Finds!

By Cheryl Reynolds / FrodoOfoi

I just got back from the lower 48. I bagged a few caches in Kentucky, Nevada and California. Who knew I'd lose 10 pounds just skulking around suburbia! Wait! What is this? An unexpected boon to this fun activity time suck?

Consulting the health charts on my phone I realized I more than tripled my daily activity for walking and running and stair climbing.

I'm now looking at the fact that buying a few travel bugs and stickers is far less expensive than a membership at some "Bounce Around R Us" gym. And I get fresh air and a new experience each time I seek out the hidden.

On my birthday, I told my extended family that I wanted to cache for my birthday, so we all met up, grabbed two Chinese foreign exchange students and set off to the Morcon Rose Garden In Oakland. I got us to GZ, read out the clues and let the family solve it. That was fun and we got to see a very old and lovingly tended collection of amazing roses. In the middle of it all, we found a letterbox that's not listed in GC or the S.F. Letterbox Assoc. I don't know where else to look.

We ended our day at Fenton's ice cream parlor for big birthday sundaes which also had a cache in the parking lot. My brother is going to bring the idea of GC to his group of Weight Watchers. They are always looking for ways to get themselves motivated to exercise.

California by far, proved to have very intelligent cache puzzles and clever hiding places and brought me to wonderful forgotten pathways, fountains, gardens and historic sites. The closer one gets to Silicon Valley the harder they get. I need a math geek to be my partner.

Around The State

GEOCACHEALASKA! MEMBERSHIP

There are two membership levels at GeocacheAlaska! Inc.

Sourdough Membership (formerly known as Premium Membership) affords you discounts in the GeocacheAlaska! online and traveling stores and events that have an entrance fee (Geofest, etc.), voting rights in Board of Directors elections and a warm fuzzy feeling for helping underwrite the organization's operating expenses that include web hosting, printing, banners, post office box fees, event prizes and lots of other things that are required to make things happen. Because GeocacheAlaska! is an incorporated 501(c)(3) tax exempt organization, your membership dues are tax deductible.

If you cannot join as a Sourdough at this time, you may support GeocacheAlaska! by joining as a Cheechako (formerly known as Associate) Member. This will allow you to receive the monthly newsletter and e-mail announcements. More members at any level gives GeocacheAlaska!'s more clout and credibility during land manager conversations, so sign up today!

There are four ways you can join GeocacheAlaska! at the Sourdough level for \$20/year.

1. Navigate to the [GeocacheAlaska! webpage](#) and click on the "Subscribe" button to set up an automatic subscription which will renew annually. Please enter your caching name in the provided box.
2. Navigate to the [GeocacheAlaska! webpage](#) and click on "Add to Cart" to purchase an annual membership.
3. Navigate to the [GeocacheAlaska! webpage](#) to download a membership form you can print and mail with your payment.
4. Attend one of the upcoming GeocacheAlaska! events and speak to any Board Member.

Find us online at:

1. GeocacheAlaska! Website: <http://www.geocachealaska.org>
2. GeocacheAlaska! Forums: <http://geocachealaska.proboards.com/index.cgi>
3. Facebook Group: <https://www.facebook.com/groups/geocachealaska/>
4. GeocacheAlaska! Facebook Page: [GeocacheAlaska! Page](#)
5. E-mail to contact@geocachealaska.org

JOIN US ON FACEBOOK & Twitter!

Like our official [GeocacheAlaska! Page](#) on Facebook to keep up to date on things happening with GeocacheAlaska!

Also, join the official [GeocacheAlaska! Group](#) on Facebook to stay in touch and share your activities with fellow members of the geocaching community. This is where GeocacheAlaska! members can plan caching adventures, post photos, and pass messages within the membership ranks. This Facebook Group is designed to be yet another member benefit for Sourdoughs and Cheechakos alike. Visit our Group and request to Join so you can start viewing and participating with GeocacheAlaska! and your fellow geocachers.

 [@GeocacheAlaska](#) Follow GeocacheAlaska! Inc. on Twitter!

STATE PARKS PERMITS

Caches may again be published within Alaska State Parks in Southcentral Alaska! The permit number is **14-KA-973**. The permit number must appear on the cache container and the cache page. Before submitting a cache listing within one of the parks, please thoroughly read the complete list of stipulations in the permit, which may be [downloaded](#) from the GeocacheAlaska! website.

NEWSLETTER INFORMATION

The editors of *Around the State* would like to hear from you. Submit articles or suggestions to editor@geocachealaska.org Subject: Around the State. Previous editions of *Around the State* are now on our website. If you have missed previous newsletters, check out the series (including previous Trail Reports) [here](#).

The Cache In Trash Out Logo is a trademark of Groundspeak, Inc. The Geocaching Logo is a registered trademark of Groundspeak, Inc. Each is used with permission.